



# KEYPOINT



# Product Catalogue





About Us .....	5	89-5740	MaxiCut® Ultra™ 40 cm Sleeve - Cut 4C .....	42
Hand Protection		89-5745	MaxiCut® Ultra™ 45 cm Sleeve - Cut 4C .....	43
<i>Tested and Verified Skin Safe</i> .....	7	56-424	MaxiDry® Palm Coated .....	44
<b>ATG®</b>		56-425	MaxiDry® 3/4 Coated .....	45
<i>ATG® Technology Platforms</i> .....	8	56-426	MaxiDry® 26 cm Gauntlet .....	46
<i>AD-APT® Technology</i> .....	9	56-427	MaxiDry® Fully Coated .....	47
42-874    MaxiFlex® Ultimate™ AD-APT® Palm Coated.....	10	56-530	MaxiDry® Plus™ 30 cm Gauntlet .....	48
42-875    MaxiFlex® Ultimate™ AD-APT® 3/4 Coated.....	11	56-451	MaxiDry® Zero™ Fully Coated.....	49
42-848    MaxiFlex® Endurance™ AD-APT® Dotted Palm Coated.....	12	56-635	MaxiChem® 35 cm Gauntlet.....	50
42-847    MaxiFlex® Endurance™ AD-APT® Dotted Driver Style .....	13	56-633	MaxiChem® 30 cm Gauntlet - Cut 3B.....	51
34-274    MaxiFlex® Elite™ Palm Coated.....	14	<i>Important Notes on Selecting Chemical Resistant Gloves.....</i>		52
34-244    MaxiFlex® Elite™ Dotted Palm Coated .....	15	34-600	MaxiFoam® Palm Coated .....	53
34-774B    MaxiFlex® Elite™ with ESD Palm Coated .....	16	34-800	MaxiFoam® Palm Coated .....	54
34-824    MaxiFlex® Active™ Palm Coated.....	17	30-201	MaxiTherm® Palm Coated .....	55
EN388:2016 - <i>Changes</i> .....	18	30-202	MaxiTherm® 3/4 Coated .....	56
34-6743    MaxiFlex® Cut™ with Dyneema® Palm Coated .....	19	<b>SW®</b>		
34-8743    MaxiFlex® Cut™ Palm Coated - Cut 3B.....	20	<i>SW® Technology Platforms.....</i>		57
34-8753    MaxiFlex® Cut™ 3/4 Coated - Cut 3B .....	21	<i>EcoTek®</i> .....		58
34-8443    MaxiFlex® Cut™ Dotted Palm Coated - Cut 3B .....	22	N71688	Powerform® Black .....	59
34-450    MaxiCut® Dry™ Palm Coated - Cut 3B .....	23	N20036	Powerform® Teal .....	60
34-470    MaxiCut® Dry™ Palm Coated - Cut 4C.....	24	N80771	Powerform® Green/Yellow .....	61
34-450LP    MaxiCut® Oil™ Palm Coated with Leather Pad - Cut 3C.....	25	N26088	MegaMan® Black.....	62
34-470LP    MaxiCut® Oil™ Palm Coated with Leather Pad - Cut 4D .....	26	<b>Orange Gripper®</b>		
34-304    MaxiCut® Oil™ Palm Coated - Cut 3B.....	27	7181	Orange Gripper®.....	63
34-305    MaxiCut® Oil™ 3/4 Coated - Cut 3B .....	28	<b>Foot Protection</b>		
44-304    MaxiCut® Oil™ Palm Coated - Cut 3B.....	29	<i>Choosing Safety Footwear.....</i>		65
44-305    MaxiCut® Oil™ 3/4 Coated - Cut 3B .....	30	<i>Sixton® Technology &amp; Performance .....</i>		66
34-504    MaxiCut® Oil™ Palm Coated - Cut 4C .....	31	<i>Logo Descriptions .....</i>		67
34-505    MaxiCut® Oil™ 3/4 Coated - Cut 4C.....	32	<i>HDry®.....</i>		69
44-504    MaxiCut® Oil™ Palm Coated - Cut 4C .....	33	<i>Arch Support from Sixton® .....</i>		70
44-505    MaxiCut® Oil™ 3/4 Coated - Cut 4C.....	34	<i>Which Arch Support is Right for Me? .....</i>		71
44-3745    MaxiCut® Ultra™ Palm Coated - Cut 5C.....	35	88056-05	Avalon HDry® .....	72
44-4745    MaxiCut® Ultra™ Palm Coated - Cut 3D .....	36	81156-23	Montana HDry® Fur Lined Rigger .....	73
44-5745    MaxiCut® Ultra™ Palm Coated - Cut 3E.....	37	88087-17	Stelvio HDry® .....	74
44-3445    MaxiCut® Ultra™ Dotted Palm Coated - Cut 5C .....	38	80087-01	Stelvio Brown .....	75
44-3455    MaxiCut® Ultra™ Dotted 3/4 Coated - Cut 5C.....	39	80087-00	Stelvio Black.....	76
44-6745    MaxiCut® Ultra™ with Dyneema® Palm Coated .....	40	81087-06	Corvara Black .....	77
58-917    MaxiCut® Ultra™ Liner - Cut 4C .....	41	52421-01	Gamma .....	78

Please be aware that the entire brochure is subject to modifications and amendments.

52023-15	Illinois .....	79
10349-01	Dealer Brown .....	80
94378-00	Auckland .....	81
94405-00	Auckland High.....	82
83295-07	Belluno .....	83
91328-09	Cuban .....	84
93343-00	Swing .....	85
52022-14	Kentucky .....	86
95398-02	Cima.....	87
95398-03	Cima.....	88
83296-07	Brescia.....	89
81153-02	Land .....	90
30329-02	Tonale.....	91
86206-00	Bergamo .....	92
86203-00	Venezia.....	93
94390-03	Adria .....	94
<b>Point of Sale</b>		
	ATG® Point of Sale.....	95
	SW® Point of Sale .....	97
	Orange Gripper® Point of Sale.....	98
	Sixton® Point of Sale.....	99

Keypoint is one of Europe's foremost experts in industrial gloves and protective footwear. As the exclusive sales partner for ATG® Intelligent Glove Solutions, SW® Safety Solutions and Sixton® Safety Footwear, we are a trusted partner for leading PPE distributors whose customers require optimum solutions for hand and foot protection.

Through our collaborations with the world's most innovative integrated manufacturers, we deliver market leading PPE products developed with a keen eye on ever-changing market requirements.

Keypoint take a consultative approach to finding the best hand and foot protection solutions for your business, understanding that the right gloves and footwear must not only offer the required levels of protection, but must also enhance, and not inhibit a person's ability to do their job with maximum efficiency.

An ISO9001:2015 certified business, we are committed to continuous improvement of management systems to drive greater efficiency and service levels to our customers from both our Dublin and Northampton warehouse facilities.

As the only hand protection experts in the market whose range of both mechanical and single use gloves is fully accredited as **skin safe** by the Skin Health Alliance, our products consistently lead the way in comfort, performance and wearer acceptance. Our objective is simple and our aim clear..... to make the industrial workplace a better, safer environment for all.

Keypoint – Protecting you at work!

### Contact Us

17-18 Keypoint Business Park  
Rosemount Park Drive  
Ballycoolin Road, D11  
D11 K6NK

Tel: +353 (0) 1 885 30 30

Fax: +353 (0) 1 885 30 31

#### UK

[www.keypoint-uk.co.uk](http://www.keypoint-uk.co.uk)  
[sales@keypoint-uk.co.uk](mailto:sales@keypoint-uk.co.uk)

#### Ireland

[www.keypoint.ie](http://www.keypoint.ie)  
[sales@keypoint.ie](mailto:sales@keypoint.ie)





# HAND PROTECTION

# HAND PROTECTION & SKIN CARE WITHOUT COMPROMISE

## TESTED & VERIFIED SKIN SAFE

As comfort is shown to be the number one priority for a glove wearer, it is imperative that work gloves not only protect the hand from hazards, but also are kind to the skin & that they do not irritate or inflame existing skin conditions. The inside of the wrong work glove can prove to be a challenging environment for the sensitive skin on the hand. A reduction or lack of breathability increases perspiration, altering the natural pH balance. Add in potentially harmful, residual chemical contaminants from the manufacturing process and a piece of PPE designed to care for the hand can very quickly lead to redness, dry & cracked skin.

At Keypoint, in conjunction with our manufacturing partners, ATG® Intelligent Glove Solutions & SW® Safety, we take caring for hands seriously. That is why we only offer safety gloves that have been independently accredited as skin safe by the Skin Health Alliance®, & Keypoint are the only hand protection expert in the market whose entire range is SHA® approved.

The Skin Health Alliance® is an impartial not for profit organisation that awards professional dermatological accreditation to products, services & brands around the world. The SHA® logo helps consumers feel confident in their choices by reassuring them products have been independently verified as skin safe.

Dermatological accreditation from the SHA® starts with a rigorous scientific review performed by a team of independent dermatologists. This is a professional analysis of a products research including a thorough assessment of the ingredients, clinical trials data and proof of efficacy. Their work is impartial & trusted by both consumers and major skin care brands around the world as an assurance that a product has met a standardised set of skin safety requirements agreed upon by leading international dermatologists & skin scientists.

Keypoint – Protection without Compromise.



# ATG<sup>®</sup> TECHNOLOGY PLATFORMS

## COMFORT PLATFORMS



### Delivering 360° Breathability

AIRtech<sup>®</sup> has set the standard for breathability. It was designed and developed to enhance comfort by eliminating heat build up inside a glove. AIRtech<sup>®</sup> is delivered, where the coating is applied, through a patented micro-foam nitrile coating. These tiny bubbles provide a network of micro-tunnels for heat to dissipate naturally, allowing the hand to breathe.

AIRtech<sup>®</sup> enables what we refer to as 360° full hand breathability. Cool hands are happier, safer and more productive. Look for the AIRtech<sup>®</sup> logo.



### For Reduced Hand Fatigue

ERGOtech<sup>®</sup> focuses on making the glove work like a second skin. ERGOtech<sup>®</sup> concentrates on maximising the form, fit and feel of our gloves, which results in a superior user experience.

ERGOtech<sup>®</sup> is designed, developed and integrated into our gloves to mimic the natural contours of the hand, to deliver outstanding flexibility, dexterity and tactile sensitivity.



## PERFORMANCE PLATFORMS



### Longer Use Saves You Money

DURAtech<sup>®</sup> is a technology platform that makes gloves last longer. Why? Because long lasting gloves simply makes good economic sense but it's not all about the durability. It's also about making sure your gloves are fresh and clean so we've designed our gloves so they can be laundered. That way you're able to make full use of the outstanding durability offered.



### For Protection Against Cuts

CUTtech<sup>®</sup> combines and blends high performance yarns and fibres to impart different levels of cut protection with the driving philosophy to deliver high levels of comfort and wearer satisfaction. Recently added to the CUTtech<sup>®</sup> range was a permanent nitrile reinforcement located between the thumb and first finger. This increases the wear in an inherently weak area of most gloves, which increases glove life and reduces cost-to-wear.



### For Better Performance

At ATG<sup>®</sup> we view grip as a key safety criteria. Our GRIPtech<sup>®</sup> "microcup" finish enhances grip properties making sure parts are handled more securely. In addition, it reduces hand fatigue associated with a lack of a proper grip. To obtain this highly efficient effect, a patented coating process is applied only where necessary, in order to enhance and maximize dexterity and flexibility. This technology has been cleverly designed to support you in dry and/or oily environments. It is frequently used in conjunction with CUTtech<sup>®</sup> to strike the optimal balance between cut resistance and grip. If it doesn't slip then it doesn't cut. GRIPtech<sup>®</sup> decreases hand fatigue and increases safety.



### For Protection Against Oils, Liquids and Chemicals

The LIQUIttech<sup>®</sup> barrier has been designed to safeguard you. It's characterised by an industry leading coating technology, unique to ATG<sup>®</sup>, delivering lightweight, flexible coatings applied to very fine gauge seamless knit liners, with various coating weights. The combination of coating and seamless knitting technologies can be engineered to provide liquid repellence, along with low and high level chemical resistance, while retaining superb levels of comfort not normally associated with liquid repellent and chemical resistance gloves.



# Keeping hot hands cool, dry & productive.

## The customer need that inspired us to develop this technology.

Today 97 per cent of glove wearers claim that comfort is their number one priority when choosing gloves with the key challenge being hot hands.

Inspired to find a solution, this led us to develop AD-APT®, which we've integrated into the iconic MaxiFlex®.

The AD-APT® Technology is activated by the movement of your hands and increased temperature within the glove, releasing a natural cooling agent that keeps your hand dry and makes them cooler.

**AD-APT® - the most intelligent way to keep gloved hands dry, cool and productive.**



**31%**  
COOLER HANDS  
VERSUS  
STANDARD  
GLOVES\*

\*This is a comparison done between MaxiFlex® Ultimate™ and MaxiFlex® Ultimate™ with the AD-APT® Cooling Technology



Cooling Technology

# MaxiFlex® Ultimate™

42-874

## Features & Benefits

- Lightweight general purpose glove
- Durable palm coating offers assured grip and long service life
- 360° Breathable
- Touchscreen compatible
- Class-leading fit form and feel, reducing hand fatigue and increasing comfort
- Unique ADAPT® technology keeps hands cool, dry & productive
- Worlds favourite & most versatile work glove

## Environments

- Dry Environment
- Precision Handling

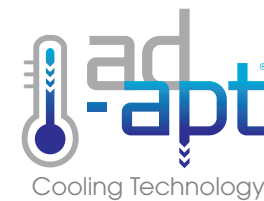
## Industries

- Aerospace
- Agriculture
- Automotive
- Construction
- DIY
- Garden
- General Handling
- Light Assembly
- Logistics
- Oil & Gas
- Utilities



Coating	Palm Coated Knitwrist
Palm Thickness	1.00 mm
Silicone Free	Yes
Sizes	5 (XXS) – 12 (XXXL)
Colour	Grey/Black
EN 388:2003	4131
EN 388:2016	4131A
Gloves per Pack	12
Gloves per Box	144

## Retail Ready



# MaxiFlex® Ultimate™

42-875

## Features & Benefits

- Lightweight general purpose glove
- Durable palm coating offers assured grip and long service life
- 360° Breathable
- Touchscreen compatible
- Class-leading fit form and feel, reducing hand fatigue and increasing comfort
- Unique ADAPT® technology keeps hands cool, dry & productive

## Environments

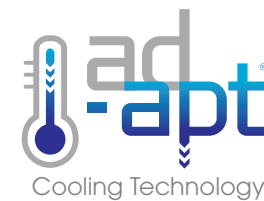
- Dry Environment
- Precision Handling

## Industries

- Aerospace
- Agriculture
- Automotive
- Construction
- DIY
- Garden
- General Handling
- Light Assembly
- Logistics
- Oil & Gas
- Utilities



<b>Coating</b>	3/4 Coated Knitwrist
<b>Palm Thickness</b>	1.00 mm
<b>Silicone Free</b>	Yes
<b>Sizes</b>	6 (XS) – 11 (XXL)
<b>Colour</b>	Grey/Black
<b>EN 388:2003</b>	4131
<b>EN 388:2016</b>	4131A
<b>Gloves per Pack</b>	12
<b>Gloves per Box</b>	144



# MaxiFlex® Endurance™

42-848

## Features & Benefits

- Lightweight general purpose glove
- Durable palm coating offers assured grip and long service life
- Raised dots for extra cushioning and increased dry grip
- 360° Breathable
- Unique ADAPT® technology keeps hands cool, dry & productive
- Distinctive easily visible orange liner

## Environments

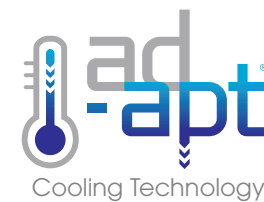
- Dry Environment
- Precision Handling

## Industries

- Aerospace
- Agriculture
- Automotive
- Construction
- DIY
- Garden
- General Handling
- Light Assembly
- Logistics
- Oil & Gas
- Utilities



<b>Coating</b>	Palm Coated Knitwrist With Dots
<b>Palm Thickness</b>	1.10 mm
<b>Silicone Free</b>	No
<b>Sizes</b>	5 (XXS) – 12 (XXXL)
<b>Colour</b>	Orange/Black
<b>EN 388:2003</b>	4131
<b>EN 388:2016</b>	4131A
<b>Gloves per Pack</b>	12
<b>Gloves per Box</b>	144



# MaxiFlex® Endurance™

42-847

## Features & Benefits

- Lightweight general purpose glove
- Fully coated glove with dotted palm for exceptional grip and long service life
- 360° Breathable
- Touchscreen compatible
- Class-leading fit form and feel, reducing hand fatigue and increasing comfort
- Unique ADAPT® technology keeps hands cool, dry & productive

## Environments

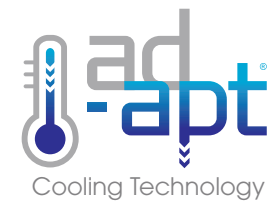
- Dry Environment
- Precision Handling

## Industries

- Aerospace
- Agriculture
- Automotive
- Construction
- DIY
- Garden
- General Handling
- Light Assembly
- Logistics
- Oil & Gas
- Utilities



Coating	Drivers Style Knitwrist With Dots
Palm Thickness	1.10 mm
Silicone Free	No
Sizes	5 (XXS) – 12 (XXXL)
Colour	Black/Black
EN 388:2003	4131
EN 388:2016	4131A
Gloves per Pack	12
Gloves per Box	144



## Features & Benefits

- Ultra lightweight - only 14 grams
- 30% thinner than the traditional foam nitrile glove
- 360° Breathable
- Class-leading fit form and feel, reducing hand fatigue and increasing comfort
- Durable coating offers assured grip and long service life

## Environments

- Dry Environment
- Precision Handling

## Industries

- Aerospace
- Automotive
- General Handling
- Light Assembly
- Logistics



<b>Coating</b>	Palm Coated Knitwrist
<b>Palm Thickness</b>	0.80 mm
<b>Silicone Free</b>	Yes
<b>Sizes</b>	6 (XS) – 11 (XXL)
<b>Colour</b>	Blue/Blue
<b>EN 388:2003</b>	4121
<b>EN 388:2016</b>	4121A
<b>Gloves per Pack</b>	12
<b>Gloves per Box</b>	144



## Features & Benefits

- Ultra lightweight - only 14 grams
- 30% thinner than the traditional foam nitrile glove
- 360° Breathable
- Class-leading fit form and feel, reducing hand fatigue and increasing comfort
- Durable coating offers assured grip and long service life
- Raised dots for extra cushioning and increased dry grip

## Environments

- Dry Environment
- Precision Handling

## Industries

- Aerospace
- Automotive
- General Handling
- Light Assembly
- Logistics



<b>Coating</b>	Palm Coated Knitwrist With Dots
<b>Palm Thickness</b>	0.90 mm
<b>Silicone Free</b>	No
<b>Sizes</b>	6 (XS) – 11 (XXL)
<b>Colour</b>	Blue/Blue
<b>EN 388:2003</b>	4121
<b>EN 388:2016</b>	4121A
<b>Gloves per Pack</b>	12
<b>Gloves per Box</b>	144



## Features & Benefits

- Ultra-lightweight ESD rated glove with enhanced grip coating.
- Highly durable, yet incredibly thin grip coating
- 360° Breathable
- Class leading fit, form and feel reducing hand fatigue and increasing comfort
- Comfortable and dexterous

## Environments

- Dry Environment
- Precision Handling

## Industries

- Aerospace
- Automotive
- Electronics
- General Handling
- Light Assembly
- Logistics



<b>Coating</b>	Palm Coated Knitwrist
<b>Palm Thickness</b>	0.75 mm
<b>Silicone Free</b>	Yes
<b>Sizes</b>	6 (XS) – 11 (XXL)
<b>Colour</b>	Light Grey/Black
<b>EN 388:2016</b>	4121A
<b>Gloves per Pack</b>	12
<b>Gloves per Box</b>	144

## Antistatic



EN 16350:2014  
 $R_v < 1 \times 10^8 \Omega$

## ESD\*

EN 61340-2-3:2017  
 $*R_v = 1,1 \times 10^6 \Omega$   
 Average/Palm





## Features & Benefits

- Lightweight general purpose glove
- Durable palm coating offers assured grip and long service life
- 360° Breathable
- Class-leading fit form and feel, reducing hand fatigue and increasing comfort
- Impregnated with Vitamin E and Aloe Vera taking care of hands during and after work

## Environments

- Dry Environment
- Precision Handling

## Industries

- Aerospace
- Agriculture
- Automotive
- DIY
- Garden
- General Handling
- Light Assembly
- Logistics
- Utilities



<b>Coating</b>	Palm Coated Knitwrist
<b>Palm Thickness</b>	1.00 mm
<b>Silicone Free</b>	Yes
<b>Sizes</b>	5 (XXS) – 11 (XXL)
<b>Colour</b>	Light Blue/Light Blue
<b>EN 388:2003</b>	4131
<b>EN 388:2016</b>	4131A
<b>Gloves per Pack</b>	12
<b>Gloves per Box</b>	144



## Protective Gloves Against Mechanical Risks

It specifies the requirements, test methods, marking and information to be supplied for protective gloves against the risk of abrasion, cut, tear, puncture and, if applicable, impact.

The new EN388 standard requires the use of a new abrasion paper, which is much more stable and will provide more reliable and consistent ratings between different test houses.

The new standard has also revisions to the coupe test. There is a new blade which is now measured via formula to determine if the blade has been dulled during the test.

If the blade has been dulled then an additional test, ISO13997:1999, has to be carried out. Finally, there is a new test for gloves offering impact protection, and the results will be a pass or a fail (EN 13594:2015).

## The Numbers

The table on the right hand side shows all the tests, performance levels and the corresponding numbers and letter. In understanding this table it can help you translate the performance levels of a glove to your needs or the needs of those your are choosing for.

The cut resistance numbers coming from the coupe test are designed to assist those where lower cut risks are present whilst ISO13997 is more suited for those exposed to medium and high cut risks.

*Tip: Always consider the grip when looking for cut gloves as the more suitable to grip the lower the risk of cuts accordingly.*

If the glove material dulls the blade during the coupe test then the number only serves as an indicative result and the TDM result, ISO13997, becomes the main result displayed as a letter from A to F. Nevertheless the coupe test number serves as a good transition reference whilst people become familiar with the lettering system of ISO13997

Test	Level					-
	1	2	3	4	5	
<b>Abrasion Resistance (Cycles)</b>	100	500	2000	8000	-	
<b>Cut Resistance - Coupe Test (Factor)</b>	1.2	2.5	5.0	10.0	20.0	
<b>Tear Resistance (N)</b>	10	25	50	75	-	
<b>Puncture Resistance (N)</b>	20	60	100	150	-	

Test	Level					
	A	B	C	D	E	F
<b>Cut Resistance - TDM(ISO) Test (N)</b>	2	5	10	15	22	30
<b>Impact Protection</b>	(NO)-			(YES)P		



Coupe-Test  
(Blade Cut Resistance)



TDM-Test  
(ISO 13997:1999)

## Features & Benefits

- With Dyneema® Diamond technology for extreme durability and cleanliness
- 360° Breathable
- Reinforced thumb crotch for extended life
- Super thin, lightweight construction offers excellent dexterity, flexibility and comfort
- DMF free and free from SVHCs (REACH)
- Medium cut protection

## Environments

- Dry Environment
- Area of Increased Risk of Cut

## Industries

- Aerospace
- Automotive
- Construction
- Fabrication
- General Handling
- Glass
- Light Assembly
- Logistics
- Oil & Gas



<b>Coating</b>	Palm Coated Knitwrist on DSM Dyneema Liner
<b>Palm Thickness</b>	0.90 mm
<b>Silicone Free</b>	Yes
<b>Sizes</b>	6 (XS) – 11 (XXL)
<b>Colour</b>	Light Green/Black
<b>EN 388:2016</b>	4X32B
<b>Gloves per Pack</b>	12
<b>Gloves per Box</b>	72

With Dyneema® Diamond technology for extreme durability and cleanliness



# MaxiFlex® Cut™

34-8743

## Features & Benefits

- Ultra lightweight medium cut protection glove
- 360° Breathable
- Touchscreen compatible
- Reinforced thumb crotch for extended life
- DMF free and free from SVHCs (REACH)
- Lightweight construction offers excellent dexterity
- Durable coating offers assured grip

## Environments

- Dry Environment
- Area of Increased Risk of Cut

## Industries

- Aerospace
- Automotive
- Construction
- Fabrication
- General Handling
- Glass
- Light Assembly
- Logistics
- Oil & Gas
- Sheet Metal Handling



Coating	Palm Coated Knitwrist
Palm Thickness	0.80 mm
Silicone Free	Yes
Sizes	6 (XS) – 12 (XXXL)
Colour	Green/Black
EN 388:2003	4331
EN 388:2016	4331B
Gloves per Pack	12
Gloves per Box	72

## Retail Ready



**NOW**  
Touchscreen  
Compatible



## Features & Benefits

- Ultra lightweight medium cut protection glove
- 360° Breathable
- Touchscreen compatible
- Reinforced thumb crotch for extended life
- DMF free and free from SVHCs (REACH)
- Lightweight construction offers excellent dexterity
- Durable coating offers assured grip

## Environments

- Dry Environment
- Area of Increased Risk of Cut

## Industries

- Aerospace
- Automotive
- Construction
- Fabrication
- General Handling
- Glass
- Light Assembly
- Logistics
- Oil & Gas
- Sheet Metal Handling



<b>Coating</b>	3/4 Coated Knitwrist
<b>Palm Thickness</b>	0.80 mm
<b>Silicone Free</b>	Yes
<b>Sizes</b>	6 (XS) – 12 (XXXL)
<b>Colour</b>	Green/Black
<b>EN 388:2003</b>	4331
<b>EN 388:2016</b>	4331B
<b>Gloves per Pack</b>	12
<b>Gloves per Box</b>	72



**NOW**  
Touchscreen  
Compatible



## Features & Benefits

- Enhanced dotted palm for extra grip and durability
- Ultra lightweight medium cut protection glove
- 360° Breathable
- Touchscreen compatible
- Reinforced thumb crotch for extended life
- DMF free and free from SVHCs (REACH)
- Lightweight construction offers excellent dexterity
- Durable coating offers assured grip

## Environments

- Dry Environment
- Area of Increased Risk of Cut

## Industries

- Aerospace
- Automotive
- Construction
- Fabrication
- General Handling
- Glass
- Light Assembly
- Logistics
- Oil & Gas



<b>Coating</b>	Palm Coated Knitwrist With Dots
<b>Palm Thickness</b>	0.90 mm
<b>Silicone Free</b>	No
<b>Sizes</b>	6 (XS) – 12 (XXXL)
<b>Colour</b>	Green/Black
<b>EN 388:2003</b>	4331
<b>EN 388:2016</b>	4331B
<b>Gloves per Pack</b>	12
<b>Gloves per Box</b>	72



## Features & Benefits

- Medium cut protection glove
- High abrasion resistance for long life
- 360° Breathable
- Reinforced thumb crotch for extended life
- Durable coating for optimised grip
- Flexible and Dexterous

## Environments

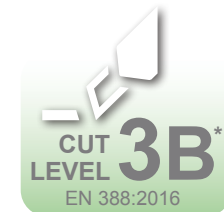
- Dry Environment
- Area of Increased Risk of Cut

## Industries

- Aerospace
- Automotive
- Construction
- Fabrication
- Glass
- Sheet Metal Handling



<b>Coating</b>	Palm Coated Knitwrist
<b>Palm Thickness</b>	1.20 mm
<b>Silicone Free</b>	No
<b>Sizes</b>	6 (XS) – 11 (XXL)
<b>Colour</b>	Green/Grey
<b>EN 388:2003</b>	4331
<b>EN 388:2016</b>	4342B
<b>Gloves per Pack</b>	12
<b>Gloves per Box</b>	72



## Features & Benefits

- High abrasion resistance for long life.
- 360° Breathable
- Reinforced thumb crotch for extended life.
- High cut protection
- Durable coating for optimised grip
- Flexible and dexterous

## Environments

- Dry Environment
- Area of Increased Risk of Cut

## Industries

- Aerospace
- Automotive
- Construction
- Fabrication
- Glass
- Sheet Metal Handling



<b>Coating</b>	Palm Coated Knitwrist
<b>Palm Thickness</b>	1.30 mm
<b>Silicone Free</b>	No
<b>Sizes</b>	6 (XS) – 11 (XXL)
<b>Colour</b>	Grey/Grey
<b>EN 388:2003</b>	4543
<b>EN 388:2016</b>	4443C
<b>Gloves per Pack</b>	12
<b>Gloves per Box</b>	72





## Features & Benefits

- Additional leather pad for enhanced grip in oily environments.
- Suitable for handling hot parts.
- Reinforced thumb crotch for extended life.
- Medium cut protection
- Excellent durability

## Environments

- Area of Increased Risk of Cut
- Oily or Wet Environment
- Thermal/Heat Resistance

## Industries

- Aerospace
- Automotive
- Construction
- Heavy Engineering
- Oil & Gas
- Rail
- Sheet Metal Handling
- Utilities



**Coating** Palm Coated Knitwrist With Leather Pad

**Palm Thickness** 2.50 mm

**Silicone Free** No

**Sizes** 8 (M) – 11 (XXL)

**Colour** Green/Grey

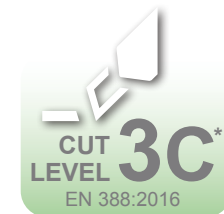
**EN 388:2003** 4332

**EN 388:2016** 4342C

**EN 407:2004** X1XXXX

**Gloves per Pack** 12

**Gloves per Box** 72



## Features & Benefits

- Additional leather pad for enhanced grip in oily environments
- High abrasion resistance for long life
- Reinforced thumb crotch for extended life
- High cut protection
- Suitable for handling hot parts

## Environments

- Area of Increased Risk of Cut
- Oily or Wet Environment
- Thermal/Heat Resistance

## Industries

- Aerospace
- Automotive
- Construction
- Heavy Engineering
- Oil & Gas
- Sheet Metal Handling
- Utilities



**Coating** Palm Coated Knitwrist With Leather Pad

**Palm Thickness** 2.50 mm

**Silicone Free** No

**Sizes** 8 (M) – 11 (XXL)

**Colour** Grey/Grey

**EN 388:2003** 4543

**EN 388:2016** 4444D

**Gloves per Pack** 12

**Gloves per Box** 72



## Features & Benefits

- Medium cut protection glove for wet & oily environments
- Double dipped to keep hands protected from oils and hydrocarbons
- Heavy duty reinforcement at thumb crotch for additional protection
- Micro-cup grip coating gives assured grip in wet & oily environments

## Environments

- Area of Increased Risk of Cut
- Oily or Wet Environment

## Industries

- Construction
- Fabrication
- Glass
- Heavy Engineering
- Oil & Gas
- Rail
- Sheet Metal Handling
- Utilities



<b>Coating</b>	Palm Coated Knitwrist
<b>Palm Thickness</b>	1.30 mm
<b>Silicone Free</b>	Yes
<b>Sizes</b>	6 (XS) – 11 (XXL)
<b>Colour</b>	Green/Black
<b>EN 388:2003</b>	4331
<b>EN 388:2016</b>	4331B
<b>Gloves per Pack</b>	12
<b>Gloves per Box</b>	72



## Features & Benefits

- Medium cut protection glove for wet & oily environments
- Double dipped to keep hands protected from oils and hydrocarbons
- Heavy duty reinforcement at thumb crotch for additional protection
- Micro-cup grip coating gives assured grip in wet & oily environments

## Environments

- Area of Increased Risk of Cut
- Oily or Wet Environment

## Industries

- Construction
- Fabrication
- Glass
- Heavy Engineering
- Oil & Gas
- Rail
- Sheet Metal Handling
- Utilities



<b>Coating</b>	3/4 Coated Knitwrist
<b>Palm Thickness</b>	1.30 mm
<b>Silicone Free</b>	Yes
<b>Sizes</b>	6 (XS) – 11 (XXL)
<b>Colour</b>	Green/Black
<b>EN 388:2003</b>	4331
<b>EN 388:2016</b>	4331B
<b>Gloves per Pack</b>	12
<b>Gloves per Box</b>	72



**NEW**

### Features & Benefits

- Medium cut protection glove for wet & oily environments
- Double dipped to keep hands protected from oils and hydrocarbons
- Reinforcement at thumb crotch for additional protection
- Micro-cup grip coating gives assured grip in wet & oily environments
- Durable yet comfortable
- Flexible and dexterous

### Environments

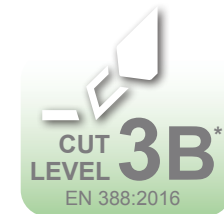
- Area of Increased Risk of Cut
- Oily or Wet Environment

### Industries

- Construction
- Fabrication
- Glass
- Heavy Engineering
- Oil & Gas
- Rail
- Utilities



<b>Coating</b>	Palm Coated
<b>Palm Thickness</b>	1.10 mm
<b>Silicone Free</b>	Yes
<b>Sizes</b>	6 (XS) – 11 (XXL)
<b>Colour</b>	Green/Black
<b>EN 388:2016</b>	4341B
<b>EN 407:2004</b>	X1XXXX
<b>Gloves per Pack</b>	12
<b>Gloves per Box</b>	72



## Features & Benefits

- Medium cut protection glove for wet & oily environments.
- Double dipped to keep hands protected from oils and hydrocarbons.
- Reinforcement at thumb crotch for additional protection.
- Micro-cup grip coating gives assured grip in wet & oily environments.
- Durable yet comfortable
- Flexible and dexterous

## Environments

- Area of Increased Risk of Cut
- Oily or Wet Environment

## Industries

- Construction
- Fabrication
- Glass
- Heavy Engineering
- Oil & Gas
- Rail
- Utilities

**NEW**



<b>Coating</b>	3/4 Coated Knitwrist
<b>Palm Thickness</b>	1.10 mm
<b>Silicone Free</b>	Yes
<b>Sizes</b>	6 (XS) – 11 (XXL)
<b>Colour</b>	Green/Black
<b>EN 388:2016</b>	4341B
<b>EN 407:2004</b>	X1XXXX
<b>Gloves per Pack</b>	12
<b>Gloves per Box</b>	144



## Features & Benefits

- High cut protection glove for wet & oily environments.
- Double dipped to keep hands protected from oils and hydrocarbons.
- Heavy duty reinforcement at thumb crotch for additional protection.
- Micro-cup grip coating gives assured grip in wet & oily environments.
- Durable yet comfortable
- Flexible and dexterous

## Environments

- Area of Increased Risk of Cut
- Oily or Wet Environment

## Industries

- Construction
- Fabrication
- Glass
- Heavy Engineering
- Oil & Gas
- Rail
- Utilities



<b>Coating</b>	Palm Coated Knitwrist
<b>Palm Thickness</b>	1.60 mm
<b>Silicone Free</b>	No
<b>Sizes</b>	6 (XS) – 11 (XXL)
<b>Colour</b>	Blue/Black
<b>EN 388:2003</b>	4542
<b>EN 388:2016</b>	4443C
<b>Gloves per Pack</b>	12
<b>Gloves per Box</b>	72



## Features & Benefits

- High cut protection glove for wet & oily environments.
- Double dipped to keep hands protected from oils and hydrocarbons.
- Heavy duty reinforcement at thumb crotch for additional protection.
- Micro-cup grip coating gives assured grip in wet & oily environments.

## Environments

- Area of Increased Risk of Cut
- Oily or Wet Environment

## Industries

- Construction
- Fabrication
- Glass
- Heavy Engineering
- Oil & Gas
- Rail
- Sheet Metal Handling
- Utilities



<b>Coating</b>	3/4 Coated Knitwrist
<b>Palm Thickness</b>	1.60 mm
<b>Silicone Free</b>	No
<b>Sizes</b>	7 (S) – 11 (XXL)
<b>Colour</b>	Blue/Black
<b>EN 388:2003</b>	4542
<b>EN 388:2016</b>	4443C
<b>Gloves per Pack</b>	12
<b>Gloves per Box</b>	72





## Features & Benefits

- High cut protection glove for wet & oily environments.
- Double dipped to keep hands protected from oils and hydrocarbons.
- Heavy duty reinforcement at thumb crotch for additional protection.
- Micro-cup grip coating gives assured grip in wet & oily environments.

## Environments

- Area of Increased Risk of Cut
- Oily or Wet Environment

## Industries

- Construction
- Fabrication
- Glass
- Heavy Engineering
- Oil & Gas
- Rail
- Sheet Metal Handling
- Utilities



<b>Coating</b>	Palm Coated Knitwrist
<b>Palm Thickness</b>	1.30 mm
<b>Silicone Free</b>	Yes
<b>Sizes</b>	7 (S) – 11 (XXL)
<b>Colour</b>	Blue/Black
<b>EN 388:2016</b>	4442C
<b>Gloves per Pack</b>	12
<b>Gloves per Box</b>	72



**NEW**

### Features & Benefits

- High cut protection glove for wet & oily environments.
- Double dipped to keep hands protected from oils and hydrocarbons.
- Heavy duty reinforcement at thumb crotch for additional protection.
- Micro-cup grip coating gives assured grip in wet & oily environments.

### Environments

- Area of Increased Risk of Cut
- Oily or Wet Environment

### Industries

- Construction
- Fabrication
- Glass
- Heavy Engineering
- Oil & Gas
- Rail
- Sheet Metal Handling
- Utilities



<b>Coating</b>	3/4 Coated Knitwrist
<b>Palm Thickness</b>	1.30 mm
<b>Silicone Free</b>	Yes
<b>Sizes</b>	7 (S) – 11 (XXL)
<b>Colour</b>	Blue/Black
<b>EN 388:2016</b>	4442C
<b>Gloves per Pack</b>	12
<b>Gloves per Box</b>	72



# MaxiCut® Ultra™

44-3745

## Features & Benefits

- Cut level 5C glove with the feel of an assembly glove
- Durable glove with high-level cut resistance
- 360° Breathable
- Touchscreen compatible
- Reinforced thumb crotch for extended life
- Thin construction for greater dexterity

## Environments

- Area of Increased Risk of Cut
- Dry Environment

## Industries

- Aerospace
- Automotive
- Construction
- Fabrication
- Facilities
- Glass
- Oil & Gas
- Rail
- Shipping/Ports
- Utilities



Coating	Palm Coated Knitwrist
Palm Thickness	1.00 mm
Silicone Free	Yes
Sizes	6 (XS) – 12 (XXXL)
Colour	Blue/Black
EN 388:2003	4542
EN 388:2016	4542C
Gloves per Pack	12
Gloves per Box	72

## Retail Ready



**NOW**  
Touchscreen  
Compatible



## Features & Benefits

- Cut level 3D glove with the feel of an assembly glove
- Durable glove with medium-level cut resistance
- 360° Breathable
- Reinforced thumb crotch for extended life
- Thin construction for greater dexterity

## Environments

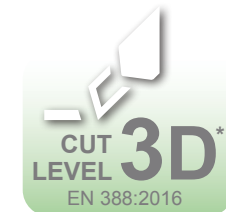
- Area of Increased Risk of Cut
- Dry Environment

## Industries

- Aerospace
- Automotive
- Construction
- Fabrication
- Facilities
- Glass
- Oil & Gas
- Rail
- Shipping/Ports
- Utilities



<b>Coating</b>	Palm Coated Knitwrist
<b>Palm Thickness</b>	1.25 mm
<b>Silicone Free</b>	Yes
<b>Sizes</b>	6 (XS) – 11 (XXL)
<b>Colour</b>	Black/Black
<b>EN 388:2016</b>	4343D
<b>Gloves per Pack</b>	12
<b>Gloves per Box</b>	72



## Features & Benefits

- Cut level 3E glove with the feel of an assembly glove
- Durable glove with medium-level cut resistance
- 360° Breathable
- Reinforced thumb crotch for extended life
- Thin construction for greater dexterity

## Environments

- Area of Increased Risk of Cut
- Dry Environment

## Industries

- Aerospace
- Automotive
- Construction
- Fabrication
- Facilities
- Glass
- Oil & Gas
- Rail
- Shipping/Ports
- Utilities



<b>Coating</b>	Palm Coated Knitwrist
<b>Palm Thickness</b>	1.30 mm
<b>Silicone Free</b>	Yes
<b>Sizes</b>	6 (XS) – 11 (XXXL)
<b>Colour</b>	Blue/Black
<b>EN 388:2016</b>	4342E
<b>Gloves per Pack</b>	12
<b>Gloves per Box</b>	72



## Features & Benefits

- Cut level 5C glove with the feel of an assembly glove.
- Durable glove with high-level cut resistance.
- 360° Breathable
- Reinforced thumb crotch for extended life.
- Dotted palm for extra grip & durability.
- Lightweight construction offers excellent dexterity.

## Environments

- Area of Increased Risk of Cut
- Dry Environment

## Industries

- Aerospace
- Automotive
- Construction
- Fabrication
- Facilities
- Glass
- Oil & Gas
- Rail
- Sheet Metal Handling
- Shipping/Ports
- Utilities



<b>Coating</b>	Palm Coated Knitwrist With Dots
<b>Palm Thickness</b>	1.10 mm
<b>Silicone Free</b>	No
<b>Sizes</b>	6 (XS) – 12 (XXXL)
<b>Colour</b>	Blue/Black
<b>EN 388:2003</b>	4542
<b>EN 388:2016</b>	4542C
<b>Gloves per Pack</b>	12
<b>Gloves per Box</b>	72



## Features & Benefits

- Cut level 5C glove with the feel of an assembly glove
- Durable glove with high-level cut resistance
- 360° Breathable
- Reinforced thumb crotch for extended life
- Lightweight construction offers excellent dexterity
- Dotted palm for extra grip and durability

## Environments

- Area of Increased Risk of Cut
- Dry Environment

## Industries

- Aerospace
- Automotive
- Construction
- Fabrication
- Facilities
- Glass
- Oil & Gas
- Rail
- Sheet Metal Handling
- Shipping/Ports
- Utilities



<b>Coating</b>	3/4 Coated Knitwrist With Dots
<b>Palm Thickness</b>	1.10 mm
<b>Silicone Free</b>	No
<b>Sizes</b>	6 (XS) – 11 (XXL)
<b>Colour</b>	Blue/Black
<b>EN 388:2003</b>	4542
<b>EN 388:2016</b>	4542C
<b>Gloves per Pack</b>	12
<b>Gloves per Box</b>	72



## Features & Benefits

- Cut resistant glove for dry environments
- With Dyneema® Diamond technology for extreme durability and cleanliness
- 360° Breathable
- Reinforced thumb crotch for extended life
- Lightweight construction offers excellent dexterity

## Environments

- Area of Increased Risk of Cut
- Dry Environment

## Industries

- Aerospace
- Automotive
- Construction
- Fabrication
- General Handling
- Glass
- Light Assembly
- Logistics
- Oil & Gas



<b>Coating</b>	Palm Coated Knitwrist on DSM Dyneema Liner
<b>Palm Thickness</b>	1.10 mm
<b>Silicone Free</b>	Pending
<b>Sizes</b>	6 (XS) – 11 (XXL)
<b>Colour</b>	Light Blue/Black
<b>EN 388:2016</b>	4X43C
<b>Gloves per Pack</b>	12
<b>Gloves per Box</b>	72

With Dyneema® Diamond technology for extreme durability and cleanliness





# MaxiCut® Ultra™ Liner

58-917

## Features & Benefits

- Lightweight cut resistant liner
- Offers excellent dexterity
- Can be worn under disposable gloves or other waterproof gloves for added cut protection
- Breathable liner used in MaxiCut® Ultra™ series

## Environments

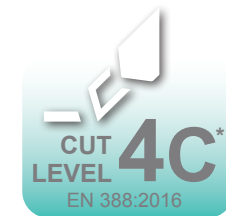
- Area of Increased Risk of Cut
- Dry Environment

## Industries

- Aerospace
- Agriculture
- Automotive
- Food
- Glass
- Utilities



<b>Coating</b>	Uncoated
<b>Palm Thickness</b>	0.80 mm
<b>Silicone Free</b>	Yes
<b>Sizes</b>	7 (S) – 11 (XXL)
<b>Colour</b>	Light Blue
<b>EN 388:2016</b>	3442C
<b>Gloves per Pack</b>	12
<b>Gloves per Box</b>	72



# MaxiCut® Ultra™ 40 cm Sleeve

89-5740

## Features & Benefits

- Cut level 4C protection
- Durable 40 cm sleeve with high-level cut resistance
- 360° Breathable
- Thin construction for comfort and flexibility
- Increased protection for your arm

## Environments

- Area of Increased Risk of Cut
- Dry Environment

## Industries

- Aerospace
- Automotive
- Construction
- Fabrication
- Facilities
- Glass
- Oil & Gas
- Rail
- Shipping/Ports
- Utilities



Coating	-
Thickness	1.00 mm
Length	40.5 cm
Silicone Free	Yes
Sizes	7 (S) & 10 (XL)
Colour	Blue
EN 388:2016	3442C
Gloves per Pack	12
Gloves per Box	72



# MaxiCut® Ultra™ 45 cm Sleeve

89-5745

## Features & Benefits

- Cut level 4C protection
- Durable 45 cm sleeve with high-level cut resistance
- 360° Breathable
- Thin construction for comfort and flexibility
- Increased protection for your arm

## Environments

- Area of Increased Risk of Cut
- Dry Environment

## Industries

- Aerospace
- Automotive
- Construction
- Fabrication
- Facilities
- Glass
- Oil & Gas
- Rail
- Shipping/Ports
- Utilities



Coating	-
Thickness	1.00 mm
Length	45.5 cm
Silicone Free	Yes
Sizes	7 (S) & 10 (XL)
Colour	Blue
EN 388:2016	3442C
Gloves per Pack	12
Gloves per Box	72



## Features & Benefits

- Lightweight liquid repellent glove with excellent dexterity
- Double dipped to keep hands protected from oils and hydrocarbons
- Micro-cup grip coating gives assured grip in wet & oily environments
- Ideal for handling wet and oily parts
- Extremely flexible and dexterous
- Excellent abrasion resistance

## Environments

- Oily or Wet Environments

## Industries

- Aerospace
- Automotive
- Construction
- DIY
- Facilities
- Garden
- General Handling
- Light Assembly
- Logistics
- Oil & Gas
- Utilities



<b>Coating</b>	Palm Coated Knitwrist
<b>Palm Thickness</b>	1.30 mm
<b>Silicone Free</b>	Yes
<b>Sizes</b>	6 (XS) – 11 (XXL)
<b>Colour</b>	Purple/Black
<b>EN 388:2003</b>	4121
<b>EN 388:2016</b>	4121A
<b>Gloves per Pack</b>	12
<b>Gloves per Box</b>	72



## Features & Benefits

- Lightweight liquid repellent glove with excellent dexterity
- Double dipped to keep hands protected from oils and hydrocarbons
- Micro-cup grip coating gives assured grip in wet & oily environments
- Ideal for handling wet and oily parts
- Extremely flexible and dexterous
- Excellent abrasion resistance

## Environments

- Oily or Wet Environment

## Industries

- Aerospace
- Automotive
- Construction
- DIY
- Facilities
- Garden
- General Handling
- Light Assembly
- Logistics
- Oil & Gas
- Utilities



<b>Coating</b>	3/4 Coated Knitwrist
<b>Palm Thickness</b>	1.30 mm
<b>Silicone Free</b>	Yes
<b>Sizes</b>	6 (XS) – 11 (XXL)
<b>Colour</b>	Purple/Black
<b>EN 388:2003</b>	4121
<b>EN 388:2016</b>	4121A
<b>Gloves per Pack</b>	12
<b>Gloves per Box</b>	72

## Retail Ready



## Features & Benefits

- Lightweight liquid repellent glove with excellent dexterity
- Double dipped to keep hands protected from oils and hydrocarbons
- Micro-cup grip coating gives assured grip in wet & oily environments
- Fully liquid repellent.
- Manufactured on a liner that's thinner than a sheet of paper.
- Unbelievable flexibility & dexterity

## Environments

- Oily or Wet Environment

## Industries

- Aerospace
- Automotive
- Construction
- DIY
- Facilities
- Fisheries
- Garden
- General Handling
- Light Assembly
- Logistics
- Oil & Gas
- Shipping/Ports
- Utilities



<b>Coating</b>	Gauntlet – 26 cm
<b>Palm Thickness</b>	1.00 mm
<b>Silicone Free</b>	Yes
<b>Sizes</b>	7 (S) – 11 (XXL)
<b>Length</b>	26cm
<b>Colour</b>	Purple/Black
<b>EN 388:2003</b>	4111
<b>EN 388:2016</b>	4111A
<b>EN 374-1:2016</b>	Type C
<b>EN 374-5:2016</b>	Yes
<b>Gloves per Pack</b>	12
<b>Gloves per Box</b>	72



## Features & Benefits

- Lightweight liquid repellent glove with excellent dexterity
- Double dipped to keep hands protected from oils and hydrocarbons
- Micro-cup grip coating gives assured grip in wet & oily environments
- Ideal for working in wet and oily environments.
- Extremely flexible and dexterous
- Excellent abrasion resistance

## Environments

- Oily or Wet Environment

## Industries

- Aerospace
- Automotive
- Construction
- DIY
- Facilities
- Fisheries
- Garden
- General Handling
- Light Assembly
- Logistics
- Oil & Gas
- Shipping/Ports
- Utilities



<b>Coating</b>	Fully Coated Knitwrist
<b>Palm Thickness</b>	1.30 mm
<b>Silicone Free</b>	Yes
<b>Sizes</b>	7 (S) – 11 (XXL)
<b>Colour</b>	Purple/Black
<b>EN 388:2003</b>	4121
<b>EN 388:2016</b>	4121A
<b>Gloves per Pack</b>	12
<b>Gloves per Box</b>	72



## Features & Benefits

- Increased resistance to oils and liquids with low chemical resistance.
- Double dipped to keep hands protected from oils and hydrocarbons.
- Micro-cup grip coating gives assured grip in wet & oily environments.
- Excellent abrasion resistance.

## Environments

- Oily or Wet Environment
- Area Requiring Low Level Chemical Resistance

## Industries

- Aerospace
- Agriculture
- Automotive
- Construction
- Oil & Gas
- Pharmaceutical
- Shipping/Ports
- Utilities



<b>Coating</b>	Gauntlet – 30 cm
<b>Palm Thickness</b>	1.10 mm
<b>Silicone Free</b>	Yes
<b>Sizes</b>	7 (S) – 11 (XXL)
<b>Length</b>	30cm
<b>Colour</b>	Blue/Black
<b>EN 388:2003</b>	4121
<b>EN 388:2016</b>	4121A
<b>EN 374-1:2016</b>	Type B/JKL
<b>EN 374-5:2016</b>	Yes
<b>Gloves per Pack</b>	12
<b>Gloves per Box</b>	72





## Features & Benefits

- Fleece lined thermal gloves to keep hands warm and dry.
- Double dipped to keep hands protected from oils and hydrocarbons.
- Micro-cup grip coating gives assured grip in wet & oily environments.
- Wicking technology takes perspiration away from the hands quickly.
- Thermal resistance to -10°C/14°F inside glove under high activity
- Coating designed to remain flexible in temperatures as low as -30°C / -22°F
- Approved for direct contact with food

## Environments

- Oily or Wet Environment
- Dry Environment
- Areas Requiring Thermal Resistance

## Industries

- Agriculture
- Cold Storage
- Construction
- Fisheries
- Food
- Oil & Gas
- Rail
- Utilities



<b>Coating</b>	Fully Coated Knitwrist
<b>Palm Thickness</b>	2.00 mm
<b>Silicone Free</b>	-
<b>Sizes</b>	7 (S) – 11 (XXL)
<b>Colour</b>	Purple/Black
<b>EN 1935/2004 (LFBG)</b>	Food Certified according to the European Standard
<b>FDA 21CFR177</b>	Compliant
<b>EN 388:2003</b>	4232
<b>EN 388:2016</b>	4232B
<b>EN 511:2006</b>	021
<b>EN 407:2004</b>	X1XXXX
<b>Gloves per Pack</b>	6
<b>Gloves per Box</b>	72



**Retail Ready**



## Features & Benefits

- Chemical resistant to a variety of commonly used industrial chemicals.
- Micro-cup grip coating gives assured grip in hazardous environments.
- Excellent comfort through a synthetic coating combined with a super light seamless liner.
- Class-leading fit form and feel helps to reduce hand fatigue.

## Environments

- Oily or Wet Environment
- Area Requiring Chemical Resistance\*

## Industries

- Construction
- Janitorial
- Maintenance
- Pharmaceutical
- Oil & Gas
- Refinery
- Utilities



<b>Coating</b>	Gauntlet – 35 cm
<b>Palm Thickness</b>	1.30 mm
<b>Silicone Free</b>	Yes
<b>Sizes</b>	7 (S) – 11 (XXL)
<b>Length</b>	35cm
<b>Colour</b>	Green/Black
<b>EN 388:2003</b>	4121
<b>EN 388:2016</b>	4121A
<b>EN 374-1:2016</b>	Type A/JKLMNO
<b>EN 374-5:2016</b>	Yes
<b>Gloves per Pack</b>	12
<b>Gloves per Box</b>	72

\*Prior to use, please ensure the glove is suitable for the chemical used.



## Features & Benefits

- Chemical resistant to a variety of commonly used industrial chemicals.
- Cut resistant liner to EN388 level 3B
- Micro-cup grip coating gives assured grip in wet & oily environments.
- Excellent comfort through a synthetic coating combined with a super light seamless liner.
- Class-leading fit form and feel helps to reduce hand fatigue

## Environments

- Oily or Wet Environment
- Area of Increased Risk of Cut
- Area Requiring Chemical Resistance\*

## Industries

- Construction
- Heavy Engineering
- Janitorial
- Maintenance
- Pharmaceutical
- Oil & Gas
- Refinery
- Utilities



<b>Coating</b>	Gauntlet – 30 cm
<b>Palm Thickness</b>	1.40 mm
<b>Silicone Free</b>	Yes
<b>Sizes</b>	8 (M) – 11 (XXL)
<b>Length</b>	30cm
<b>Colour</b>	Dark Green/Black
<b>EN 388:2003</b>	4342
<b>EN 388:2016</b>	4342B
<b>EN 374-1:2016</b>	Type A/JKLMNO
<b>EN 374-5:2016</b>	Yes
<b>Gloves per Pack</b>	12
<b>Gloves per Box</b>	72



\*Prior to use, please ensure the glove is suitable for the chemical used.



# Important Notes for Selecting Chemical Resistant Gloves:

## Notes

Your selected glove should only be used in accordance with the pictograms printed on the glove. Please ensure that if you are working with chemicals that the gloves have the chemical pictogram printed on the glove and are suitable for the chemical that you are exposed to.

Further information about chemical permeation levels can be found at [www.atg-glovesolutions.com](http://www.atg-glovesolutions.com).

This information does not reflect the actual duration of protection in the workplace and the differentiation between mixtures and pure chemicals.

The chemical resistance has been assessed under laboratory conditions from samples taken from the palm only and relates only to the chemical tested. It can be different if it is used in a mixture.

EN ISO 374-1:2016+A1:2018 Permeation/Degradation				
Chemical	MaxiChem®		MaxiChem® Cut™	
	Permeation	Degradation	Permeation	Degradation
A - Methanol CAS-Nr. 67-56-1	Level 2 56 min	DR: 47%	Level 2 39 min	DR: 1%
C - Acetonitrile CAS-Nr. 75-05-8	Level 1 16 min	DR: 40%	Level 1 12 min	DR: 5%
J - n-Heptane CAS-Nr. 142-82-5	Level 6 >480 min	DR: 14%	Level 6 >480 min	DR: 0%
K - Sodium hydroxide 40% CAS- Nr. 1310-73-2	Level 6 >480 min	DR: 12%	Level 6 >480 min	DR: -4%
L - Sulphuric acid 96% CAS-Nr. 7664-93-9	Level 4 130 min	DR: 26%	Level 4 130 min	DR: 12%
M - Nitric acid 65% CAS-Nr. 7697-37-2	Level 4 189 min	DR: -1%	Level 4 132 min	DR: 9%
N - Acetic acid 99% CAS-Nr. 64-19-7	Level 3 105 min	DR: 32%	Level 3 94 min	DR: 7%
O - Ammonia 25% CAS-Nr. 1336-21-6	Level 6 >480 min	DR 16%	Level 5 421 min	DR: 18%
T - Formaldehyde 37% CAS-Nr. 50-00-0	Level 2 30 min	DR 3%	Level 2 30 min	DR 10%

### Permeation - performance levels according to EN ISO 374-1: 2016 + A1: 2018:

0	1	2	3	4	5	6
<10 min	>10 min	>30 min	>60 min	>120 min	>240 min	>480 min

**Degradation:** may alter one or more of the glove characteristics due to contact with chemical(s).

**DR:** Degradation Rate

**Penetration:** is the movement of a "chemical" and/or micro-organism through porous materials, seams, pinholes or other imperfections in a protective glove material at a non-molecular level.

**Permeation:** Breakthrough of a chemical through the material of the protective glove at the molecular level.

## Features & Benefits

- Lighter and thinner, offering better dexterity than MaxiFoam 34-800
- Lightweight foam nitrile on a seamless liner.
- Foam nitrile coating designed to channel away oil for better grip.
- Great abrasion resistance.

## Environments

- Oily or Wet Environment

## Industries

- Aerospace
- Automotive
- Construction
- General Handling
- Light Assembly
- Logistics
- Rail
- Utilities



<b>Coating</b>	Palm Coated Knitwrist
<b>Palm Thickness</b>	1.00 mm
<b>Silicone Free</b>	Yes
<b>Sizes</b>	5 (XXS) – 11 (XXL)
<b>Colour</b>	Grey/White
<b>EN 388:2003</b>	4121
<b>EN 388:2016</b>	4121A
<b>Gloves per Pack</b>	12
<b>Gloves per Box</b>	144

## Features & Benefits

- Lightweight foam nitrile on a seamless liner.
- Foam nitrile coating designed to channel away oil for better grip.
- Excellent abrasion resistance.

## Environments

- Oily or Wet Environment

## Industries

- Aerospace
- Automotive
- Construction
- General Handling
- Light Assembly
- Logistics
- Rail
- Utilities



<b>Coating</b>	Palm Coated Knitwrist
<b>Palm Thickness</b>	1.10 mm
<b>Silicone Free</b>	Yes
<b>Sizes</b>	6 (XS) – 11 (XXL)
<b>Colour</b>	Grey/White
<b>EN 388:2003</b>	4131
<b>EN 388:2016</b>	4121A
<b>Gloves per Pack</b>	12
<b>Gloves per Box</b>	144



## Features & Benefits

- Thermal lined glove for general handling in cold conditions.
- Made with natural latex on a seamless synthetic liner with a patented non-slip grip coated.
- Latex coating gives excellent grip in wet or dry conditions.
- Palm coating offers resistance from water and glove retains breathability on the back of the hand.
- Suitable for use in temperatures as low as -15°C.
- Suitable for use with contact heat up to +250°C for 15 seconds.
- Distinctive orange liner.

## Environments

- Oily or Wet Environment
- Dry Environment
- Area Requiring Thermal/Heat Protection

## Industries

- Agriculture
- Cold Storage
- Construction
- Engineering
- DIY
- Garden
- General Handling
- Light Hot Works
- Oil & Gas
- Rail
- Utilities
- Waste Management



<b>Coating</b>	Palm Coated Knitwrist
<b>Palm Thickness</b>	2.50 mm
<b>Silicone Free</b>	No
<b>Sizes</b>	6 (XS) – 11 (XXL)
<b>Colour</b>	Orange/Grey
<b>EN 388:2003</b>	1241
<b>EN 388:2016</b>	1241B
<b>EN 511:2006</b>	X1X
<b>EN 407:2004</b>	X2XXXX
<b>Gloves per Pack</b>	12
<b>Gloves per Box</b>	72

## Retail Ready



## Features & Benefits

- Thermal lined glove for general handling in cold conditions.
- Made with natural latex on a seamless synthetic liner with a patented non-slip grip coated.
- Latex coating gives excellent grip in wet or dry conditions.
- 3/4 coating offers resistance from water and glove retains breathability on the back of the hand.
- Suitable for use in temperatures as low as -15°C.
- Suitable for use with contact heat up to +250°C for 15 seconds.
- Distinctive orange liner.

## Environments

- Oily or Wet Environment
- Dry Environment
- Area Requiring Thermal/Heat Protection

## Industries

- Agriculture
- Cold Storage
- Construction
- Engineering
- DIY
- Garden
- General Handling
- Light Hot Works
- Oil & Gas
- Rail
- Utilities
- Waste Management



<b>Coating</b>	3/4 Coated Knitwrist
<b>Palm Thickness</b>	2.50 mm
<b>Silicone Free</b>	No
<b>Sizes</b>	7 (S) – 11 (XXL)
<b>Colour</b>	Orange/Grey
<b>EN 388:2003</b>	1241
<b>EN 388:2016</b>	1241B
<b>EN 511:2006</b>	X1X
<b>EN 407:2004</b>	X2XXXX
<b>Gloves per Pack</b>	12
<b>Gloves per Box</b>	72





# SW<sup>®</sup> TECHNOLOGY PLATFORMS

## PROTECTION ON THE OUTSIDE

### TracTek<sup>®</sup>

TracTek<sup>®</sup> technology includes a high density pattern specifically designed to maximise grip in wet or oily conditions. Optimal grip is achieved by channeling fluids effectively and maximizing surface-to-surface contact area.

## PROTECTION ON THE INSIDE

### DriTek<sup>®</sup>

SW's DriTek<sup>®</sup> technology is a moisture-wicking system that pulls sweat away from the skin leaving the wearer dryer, cooler and more comfortable. Not only does DriTek<sup>®</sup> provide a glove that is healthier and more comfortable, it also provides a glove that is easier to don and doff. This includes glove changes with recently washed or damp hands.

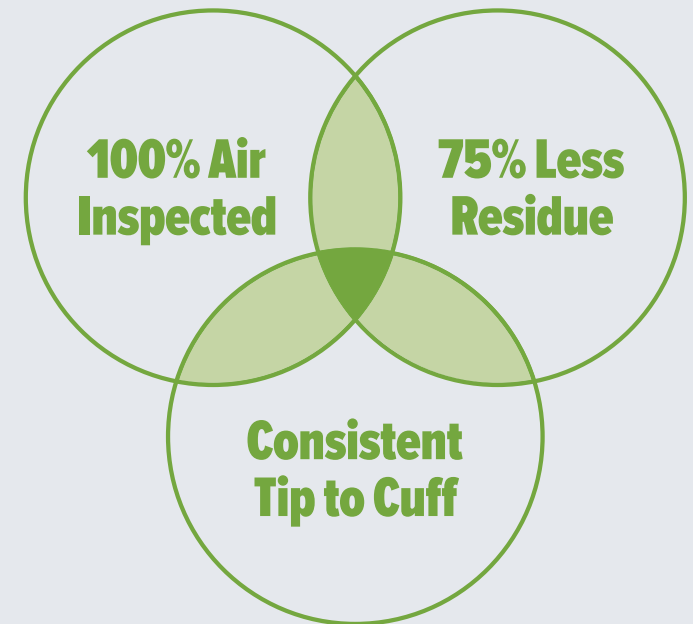
## PROTECTION FOR THE WORLD

### EcoTek<sup>®</sup>

A nitrile treatment that accelerates the break-down in landfills without any performance loss. Gloves with EcoTek<sup>®</sup> biodegrade by 92.6% in only 2 years & 6 months under test method ASTM D5526-12.



## Feel The SW<sup>®</sup> Difference



**Better products start with better manufacturing.**

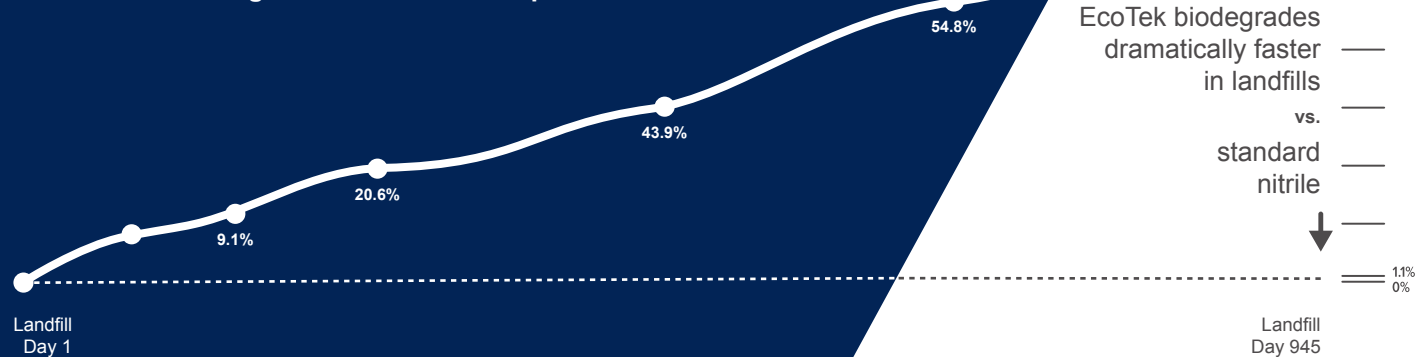
# EcoTek®

**FINALLY. BIODEGRADABILITY WITHOUT PERFORMANCE LOSS.**

## Introducing SW® EcoTek® Biodegradable Technology

A nitrile treatment that accelerates the breakdown in a landfill without any performance loss.

SW® nitrile gloves with EcoTek® biodegrade by 92.6% in only 2 years and 6 months under test method ASTM D5526-12, while competing products show virtual no degradation in the same period.



ASTM D5526-12 test results do not predict future biodegradation.

SW manufactures with EcoTek®



Used gloves disposed in bin



In landfill, heat and moisture activate EcoTek®



EcoTek® breaks apart nitrile



945 days later, waste volume is reduced by 92.6%



**Feel the difference.™**

# PowerForm® Black EcoTek® Biodegradable Nitrile Exam Gloves

N71688

The PowerForm® Black provides performance, durability and consistent quality in a standard 9" length. Now available with EcoTek® Biodegradability technology for a 0.13mm (5 mil) glove that excels at protecting your hands and the environment.

## Features & Benefits

- EcoTek® Biodegradable in Landfill to ASTM D5526-12
- 1.5 AQL offering high-performance protection
- Touchscreen compatible
- Fully textured surface provides excellent wet and dry grip
- Beaded cuff allows for easy donning and removal
- Pure nitrile prevents latex allergic reaction
- Skin Health Alliance accredited

## Environments

- Oily and Wet Environments
- Chemical Environment

## Industries

- Agriculture
- Automotive
- Chemical
- Cosmetics
- DIY
- Facilities
- Light Assembly
- Painting
- Pharmaceutical
- Tattooing
- Utilities



<b>Construction</b>	Nitrile
<b>Colour</b>	Black
<b>Fingertip Thickness</b>	0.14mm
<b>Palm Thickness</b>	0.13mm
<b>Length</b>	229mm
<b>Tensile Strength</b>	22 MPa
<b>Elongation</b>	540%
<b>Sizes</b>	7 (S) – 11 (XXL)
<b>AQL</b>	1.5
<b>Silicone Free</b>	Yes
<b>EN374-1:2016</b>	Type B - JKT
<b>EN374-5:2016</b>	Virus
<b>Food Approved</b>	Yes
<b>Gloves per Box</b>	100
<b>Boxes per Case</b>	10

**PF** PF-065-090-ECO-BK

WEIGHT	LENGTH	THICKNESS	FEATURES	COLOR
6.5g (large size)	9.0" 229mm	5.0 mil	EcoTek®	BLACK

**EcoTek**



EcoTek®

ISO 374-1/TYPE B



JKT

EN ISO 374-5



VIRUS

CE 0493



EAC  
TP TC 019/2011



# PowerForm® Teal EcoTek® Biodegradable Nitrile Exam Gloves

**N20036**

An extremely versatile 0.13mm (5 mil) exam nitrile glove, the PowerForm® Teal, now featuring EcoTek® Biodegradability, provides the perfect blend of control, toughness and consistent quality in a standard 242mm (9.5") length.

## Features & Benefits

- EcoTek® Biodegradable in Landfill to ASTM D5526-12
- 1.5 AQL offering high-performance protection
- Silicone-free formulation prevents contamination
- Beaded cuff allows for easy donning and removal
- Fully textured surface provides excellent wet and dry grip
- Skin Health Alliance Accredited
- Touchscreen compatible

## Environments

- Oily and Wet Environments
- Dry Environments
- Chemical Environments

## Industries

- Agriculture
- Automotive
- Chemical
- DIY
- Fabrication
- Facilities
- Food
- Garden
- Janitorial
- Light Assembly
- Packing
- Pharmaceutical
- Utilities



<b>Construction</b>	Nitrile
<b>Colour</b>	Teal
<b>Fingertip Thickness</b>	0.15mm
<b>Palm Thickness</b>	0.13mm
<b>Length</b>	242mm
<b>Tensile Strength</b>	21 MPa
<b>Elongation</b>	560%
<b>Sizes</b>	7 (S) – 11 (XXL)
<b>AQL</b>	1.5
<b>Silicone Free</b>	Yes
<b>EN 374-1:2016</b>	Type B - JKT
<b>EN 374-5:2016</b>	Virus
<b>Food Approved</b>	Yes
<b>Gloves per Box</b>	100
<b>Boxes per Case</b>	10

**PF** PF-065-095-ECO-TL

WEIGHT	LENGTH	THICKNESS	FEATURES	COLOR
6.5g (large size)	9.5" 242mm	5.0 mil	EcoTek®	TEAL

EcoTek



EcoTek®



CE 0493



# PowerForm® Green/Yellow High Performance Grip Nitrile Exam Gloves

**N80771**

Loaded with unique skin health and performance features, the PowerForm® Green/Yellow is recognised as the ultimate answer when grip, protection and comfort are essential. This glove also delivers EN Level 2 Abrasion for durability in an extended cuff design.

## Features & Benefits

- TracTek® high density pattern designed to maximise grip in wet or oily conditions
- Color-Q® – 2-Ply Colour construction provides durability and visual breach detection with contrasted interior colour
- Silicone-free formulation prevents contamination
- Skin Health Alliance accredited.

## Environments

- Oily and Wet Environments
- Chemical Environment

## Industries

- Automotive
- Chemical
- Engineering
- Fabrication
- Facilities
- Food
- Janitorial
- Light Assembly
- Liquid Handling
- Oil & Gas
- Painting
- Pharmaceutical
- Utilities
- Waste Management



<b>Construction</b>	2-Layer Nitrile
<b>Colour</b>	Green/Yellow
<b>Fingertip Thickness</b>	0.18mm
<b>Palm Thickness</b>	0.14mm
<b>Length</b>	280mm
<b>Tensile Strength</b>	21 MPa
<b>Elongation</b>	560%
<b>Sizes</b>	7 (S) – 11 (XXL)
<b>AQL</b>	1.5
<b>Silicone Free</b>	Yes
<b>EN 388:2016</b>	2XX1X
<b>EN 374-1:2016</b>	Type B - JKT
<b>EN 374-5:2016</b>	Virus
<b>Food Approved</b>	Yes
<b>Gloves per Box</b>	50
<b>Boxes per Case</b>	10

**PF** PF-106-110-TTK/BAL-GR/YW

WEIGHT	LENGTH	THICKNESS	FEATURES	COLOR
10.6g (large size)	11.0" 280mm	5.5 mil	TracTek® Breach Alert™	GREEN YELLOW



TracTek® CE 0493



# MegaMan® Black EcoTek® Absorbent-Lined Nitrile Gloves

**N66088**

The advanced comfort of DriTek® sweat management and unprecedented strength in a fully textured, 11" extended cuff glove. MegaMan® Black features a multi-layer, moisture-wicking construction with EN Level 3 Abrasion resistance for the ultimate in comfort and performance.

## Features & Benefits

- DriTek® layer for moisture-wicking comfort & easy donning
- EcoTek® Biodegradable in Landfill to ASTM D5526-12
- 1.5 AQL offering high-performance protection
- Multi-layer technology delivers EN Level 3 Abrasion resistance
- Fully textured grip pattern provides excellent wet & dry grip
- Skin Health Alliance Accredited
- Touchscreen compatible

## Environments

- Oily and Wet Environments
- Dry Environments
- Chemical Environment

## Industries

- Aerospace
- Agriculture
- Automotive
- Chemical
- DIY
- Fabrication
- Facilities
- Food
- Janitorial
- Light Assembly
- Maintenance
- Pharmaceutical
- Utilities
- Waste Management



<b>Construction</b>	Nitrile
<b>Colour</b>	Black
<b>Fingertip Thickness</b>	0.26mm
<b>Palm Thickness</b>	0.22mm
<b>Length</b>	280mm
<b>Tensile Strength</b>	17 MPa
<b>Elongation</b>	560%
<b>Sizes</b>	7 (S) – 12 (XXXL)
<b>AQL</b>	1.5
<b>Silicone Free</b>	Yes
<b>EN 388:2016</b>	3000X
<b>EN 374-1:2016</b>	Type B - JKT
<b>EN 374-5:2016</b>	Virus
<b>Food Approved</b>	Yes
<b>Gloves per Box</b>	50
<b>Boxes per Case</b>	10

**MM** MM-128-110-DRK/ECO-BK

WEIGHT	LENGTH	THICKNESS	FEATURES	COLOR
12.8g (large size)	11.0" 280mm	8.5 mil	DriTek® EcoTek®	BLACK

**ECOTEK**



**DriTek®**  
**EcoTek®**

CE 0493

**EAC**  
TP TC 019/2011



# Orange Gripper® Nitrile Tyre Tread Disposable Gloves

7181

Orange Gripper® is the new, orange nitrile, disposable glove with tyre tread grip that provides amazing slip protection in wet conditions. A 0.18mm (7 mil) glove with 1.5 AQL protection, Orange Gripper® gives ultimate hand protection from various chemicals, dirt and grease.

## Features & Benefits

- Tyre Tread Grip
- Chemical Resistant
- Powder Free
- Extra Thick (0.18mm)
- Nitrile Disposable
- AQL 1.5
- Touch Screen Compatible

## Environments

- Oily and Wet Environments
- Dry Environments

## Industries

- Agriculture
- Automotive
- Chemical
- Construction
- Cosmetics
- Food
- General Fabrication
- Janitorial
- Packaging
- Painting



**ORANGE  
GRIPPER®**



<b>Construction</b>	Nitrile
<b>Colour</b>	Orange
<b>Fingertip Thickness</b>	0.19mm
<b>Palm Thickness</b>	0.20mm
<b>Cuff Thickness</b>	0.13mm
<b>Length</b>	240mm
<b>Tensile Strength</b>	22 MPa
<b>Elongation</b>	500%
<b>Sizes</b>	8 (M) – 11 (XXL)
<b>AQL</b>	1.5
<b>Powdered / Powder Free</b>	Powder Free
<b>EN 374-1:2016</b>	Type B - KPR
<b>EN 374-5:2016</b>	Yes
<b>EN 388:2016</b>	0X00A
<b>EN 420:2003 + A1:2009</b>	Yes
<b>EN 455</b>	1-2-3-4
<b>Food Approved</b>	Yes
<b>Gloves per Box</b>	100 (XXL - 90 Gloves)
<b>Boxes per Case</b>	10



# FOOT PROTECTION



# CHOOSING SAFETY FOOTWEAR

When shopping for safety footwear, generally speaking the primary concern will be around meeting the basic safety requirements. But how many people consider the impact this might have on the rest of the body? Here are some important tips to keep in mind when choosing your safety shoes and boots:

**Wriggle Room** - Make sure the shoe is wide enough for your foot and that the toes have plenty of room to move. If there is a toe cap, be sure to check that it is well cushioned. If you are looking for ladies shoes, look for a shoe made specifically for ladies, rather than just a scaled down version of a gent's shoe.

**Support In All The Right Places** - A well-made pair of shoes will have a construction that supports and correctly aligns the foot and ankle within the boot. This foundation will then improve your general posture and alleviate pressure on your other joints. Look for a well-supported heel counter, one that does not easily collapse when you put pressure on it. Having the foot correctly positioned and supported in the shoe or boot at the heel, reduces lateral movement and will have benefits that you will feel throughout the rest of your lower body.

**To Flex Or Not To Flex** - Another important feature is support within the shank of the shoe. This support at the arch will again help with overall posture. A shoe that is too flexible in the wrong places, lacks the support your foot needs. Worse again is a shoe with a sole so rigid, it barely flexes at all. Before you try on a shoe, try bending it with your hand. If it only bends at the flex point of the foot, you know it has the support you need provided by an internal shank running along the arch.

**Long-Term Comfort** - A common trick some manufacturers of poor-quality safety shoes will use is to utilise soft but very comfortable materials in the midsole or insole. The problem here is that these materials are not designed to be worn in harsh environments like construction sites or industrial workplaces for an entire working day. A good quality shock absorbing insole is important, but the best safety shoes will have a robust midsole that will disperse impact laterally away from the body and is built to last.

**Expert Advice** – When buying safety shoes, look out for brands that only manufacture safety footwear. In this way, you benefit from generations of expertise in shoe making and the focus and dedication required to make the very best safety footwear.



## 3D Air circulation

Sixton® chooses the best materials. Hi-tech fibres guarantee the best possible performance even right inside the footwear, which is less visible but so important for the wellbeing of the foot. The new 3D Air Ax lining is the result of the combination of two technical yarns, Amicor and Coolmax®.

## BLOWFIT

The upper part in FLYFIT, in direct contact with the foot, guarantees transpiration and comfort. By compressing and expanding, the perforated EVA part lets out the moist air, away from the foot, generating a flow of air, which improves comfort and the micro climate inside the footwear.

## blow<sup>2.0</sup> fit

Anatomical and ergonomic removable insole with Flyfit, in direct contact with the foot, breathable, and comfortable. The EVA HD perforated and thermoformed support ensures comfort and energy absorption.



Composite Toe Cap- A toe cap made of plastic that is incredibly light and resistant to impacts over 200J.



Designed especially for winter use. It is made of highly resistant and absorbent felt, which keeps the foot warm and dry. A softer and comfortable layer of insulating polyethylene and a film of "aluminised" polyethylene contribute in perfectly insulating the foot from the ground. Perfect for winter use and for "CI" marked footwear for protection against cold.



Thanks to our production capacity and the common use of electronic devices, Sixton® extends its range of ESD footwear, in compliance with the latest reference standards for EPA areas (IEC EN 61340-5-1:2016, IEC EN 61340-4-3:2018, IEC EN 61340-4-5:2018). Sixton® ESD footwear is designed and produced by using conductive materials which assure the perfect performance of electric characteristics throughout the whole lifespan of the footwear. Furthermore, it allows the substitution of the worn-out insole without any loss of ESD properties.



A personalised collection for those who are not comfortable in standard width footwear. Three models with a wide (L) or narrow (S) but also standard (M) width for matching clothing in the workplace.



Highly breathable and absorbent anatomic insole. Multilayer structure to take advantage of the peculiarities of each component. The foot lies on a highly breathable and wear resistant soft cloth layer. Right below, a comfortable memory foam layer hosts the foot respecting its anatomy. 3 layers of different materials to support the body in a correct and progressive way.



A multilayer material, humidity absorbent, self-forming, and stabilizing insole.



This symbol means that the shoe was made with a High Anti-Bacterial Component.



This symbol means that the product has been made using materials other than metal.



The microfibers used in Sixton Peak® footwear are extremely soft, light, resistant are technical microfibers with a high technological and innovative content, made for the safety footwear sector. They are the result of studies and research that have made it possible to achieve a high level of resistance and eco-compatibility, with new performing finishes. "MicroFiber XTop" and "MicroFiber XPro" are water repellent, for S2 footwear, breathable and easy to clean with high dimensional stability. "MicroFiber Suede" is synonymous with touch and pleasantness, softness and breathability, with an extremely comfortable effect. "MicroFiber Top" is water-repellent, light and very resistant to chemical and physical stress. Sixton Peak® microfibers are extremely resistant.



The microfiber/tissue on the toe cap is protected by Pro-Tech SXT to increase the resistance of the upper over time.



Comfortable memory foam cushion that embraces the foot while keeping the anatomy intact. Multilayer structure to take advantage of the peculiarities of each single component. A soft, highly breathable and wear-resistant fabric in contact with the foot. Right underneath a comfortable memory foam cushion that embraces the foot while keeping the anatomy intact.



Steel protection with anti-corrosion paint. Protection of over 200J. Comfortable fit, with compensation rubber. Stainless steel foil with acid-resistant paint.



This shoe is recommended for working environments with classification "light": Automotive, logistics, transport, light industry.



Vibram® Arctic Grip is a totally new approach to frozen surface grip, especially on wet ice. The technology uses just Vibram® rubber, without the need to add external metal accessories. All models feature reliefs designed with Vibram® Arctic Grip technology that ensures good grip on oily surfaces and wet ice, as well as thermochromic reliefs that detect when the temperature drops to 32° F / 0° C, adding a touch of colour in cold situations.



The Vibram® "FIRE & ICE" compound has been formulated for extreme uses while maintaining its performance features within considerable temperature limits (from -20° C to + 300° C). This formulation can be used in all external conditions where resistance to fire / heat and a good grip must be maintained together with the expected anti-static and HRO values, even in very cold climatic conditions.



Designed to improve grip on smooth, cold, icy or snow-covered ground. It leaves you free to move around and work in safety in the mountains and in particularly cold places. It does not scratch or ruin floors. The softness of the insole adheres to smooth surfaces. The aggressive design considerably improves traction and cleaning. Grip, durability and comfort by Vibram® and Sixton®.



Textile anti-perforation insert. Resistant to over 100N with zero perforation



200 Joule Resistant Toe Cap



Shock Absorption in the Heel Area



Sole Resistant to Oil and Hydrocarbons



Anti-Static Footwear



Water Repellent Upper



Breathable Upper



Anti-Perforation Protection



Water Resistant Footwear



Sole Resistant to Heat by Contact



Insulation Against the Cold



Heat Insulation



Metatarsal Protection



Anti-Slippery

HDry® further develops '3D' lamination technology for absolutely waterproof, highly breathable and comfortable footwear. Guaranteed.

Thanks to the direct lamination process of the membrane on the upper, now made with an innovative patented machinery, footwear with HDry® technology reaches even higher levels of performance and comfort.

The steady and uniform adhesion of the waterproof and breathable membrane to the internal surface of the upper seals any potential entry point of the water into the shoe at the outermost level, avoiding any risk of penetration.

HDry® greatly improves performance and comfort compared to traditional membranes used in combination with a lining.

## Features & Benefits

- It leaves no space between the upper and the membrane and does not allow water to penetrate into the shoe. There is therefore no increase in weight and the footwear dries faster.
- Designed specifically for the process, it uses a hydrophilic membrane that is extremely breathable and has a high sweat dispersion capability (SATRA TM 47 test).
- Leaves an ample dry air space between the membrane and foot, allowing ideal comfort conditions to be maintained.
- The HDry® membrane has an exceptional elasticity and resistance to repeated flexing, guaranteeing high performance for a very long life.

## HDry®: A Waterproof Breathable Barrier

Sixton has for many years now adopted the waterproofing process by laminating the membrane on the upper for its 'Water Resistant' footwear. The HDry® direct '3D' lamination represents today the most advanced evolution of this technology.

In footwear with traditional "bootie" system, the water, although not reaching the foot, can penetrate between the upper and the lining, where it stagnates, significantly limiting comfort and increasing the weight of the shoe. In addition, the proximity of the water to the foot increases the feeling of cold and, in case of low temperatures, can get to freeze.

Also due to the stagnation of water between the waterproof lining and the upper, the drying time becomes long to complete making it difficult to use the shoe for long periods. HDry® technology solves these problems. The waterproof membrane is steadily bonded to the upper by the lamination process, avoiding the risk of water passage, and keeping the space around the foot dry and warm.

HDry® Technology keeps water out...



while still being breathable.



**HDry**  
WATERPROOF BREATHABLE®

If you're on your feet for most of the day then you know how important the fit of your shoes are to the comfort of your feet. You might even be experiencing foot pain or suffering from common foot problems already. Using arch supports will help reduce your foot pain and make walking & standing much more comfortable by distributing pressure across your arches and provide stability, balance, and support.

### Benefits of wearing arch supports:

- **Provide stability and balance.** Arch supports can help improve your posture and balance which can help reduce foot pain and problems related to imbalance of the spine as well as from a lack of proper foot support.
- **Reduce or prevent pain.** Not all foot pain is from lack of stability. Arch supports can help reduce your foot pain or discomfort from standing for long periods of time.
- **Distributes pressure.** Arch supports evenly distribute pressure across your feet and align your body.
- **Provide support.** For those who require specialised support, their feet ailments may demand that they use artificial supports. These can help to alleviate pain and/or prevent further damage. This might be especially beneficial for those who suffer from plantar fasciitis (Plantar fasciitis is an inflammation of the fibrous tissue (plantar fascia) along the bottom of your foot that connects your heel bone to your toes).
- **Prevent your arches from harm.** Arch supports also provide support to your arches which prevent them from collapsing. Once they collapse, the plantar fascia might stretch which could lead to painful foot conditions such as plantar fasciitis.

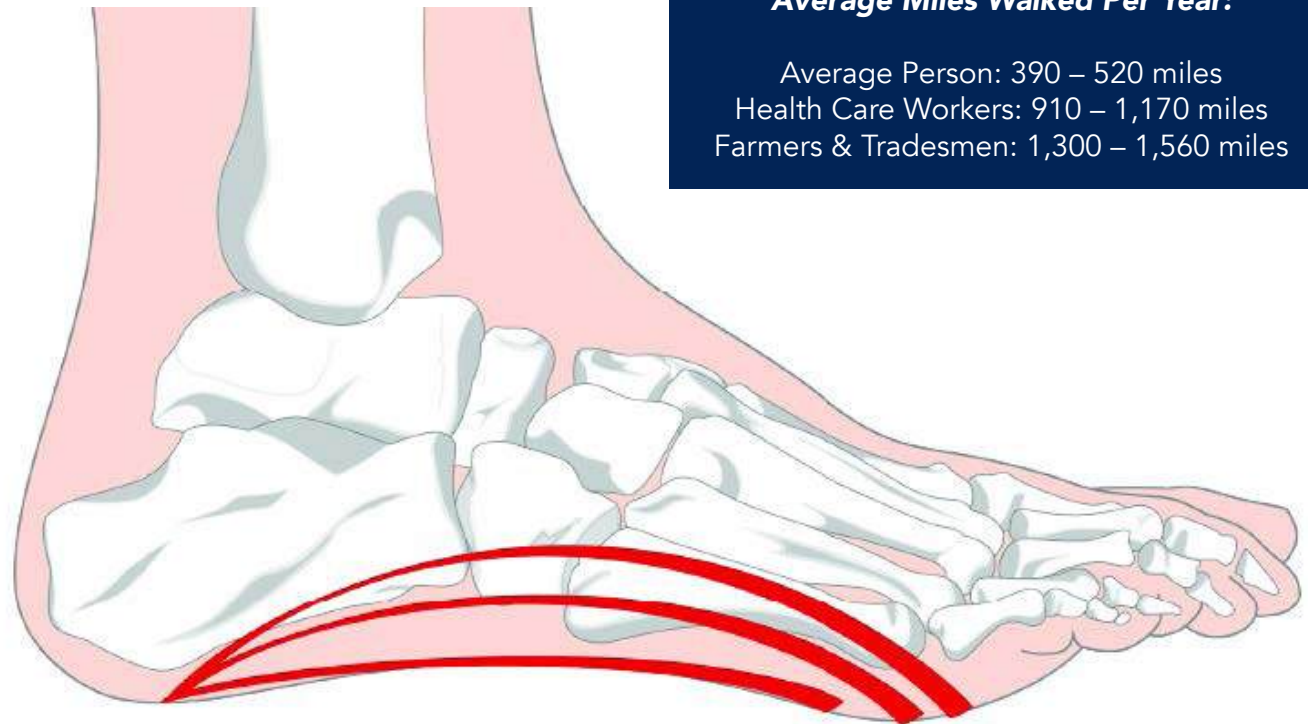
### More Comfort for Your Employees:

*Most important benefits in the industrial environment:*

- Better support, more comfort
- Improved stability & posture
- Reduction in foot & joint pain
- Happier workforce & fewer lost production hours

### Average Miles Walked Per Year:

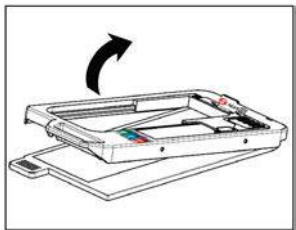
Average Person: 390 – 520 miles  
Health Care Workers: 910 – 1,170 miles  
Farmers & Tradesmen: 1,300 – 1,560 miles



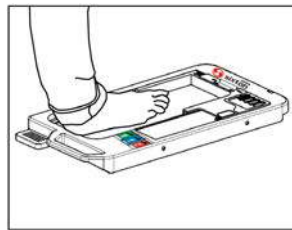
# Which Arch Supports Is Right For Me?

## Feetview

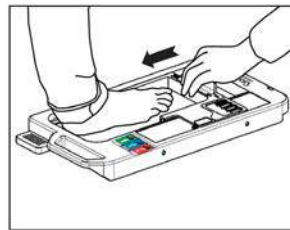
For people already suffering from chronic conditions of the feet or persistent pain, arch supports can help alleviate symptoms and assist in recovery. But how do you know which one to pick? With Feetview from Sixton® you can find out which Arch Support is right for you.



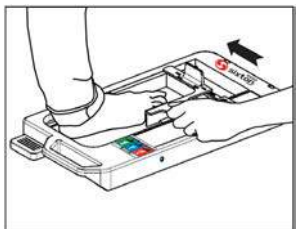
Open Unit



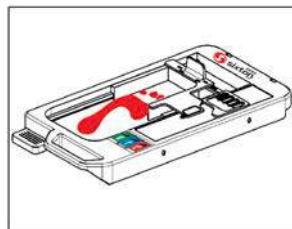
Place Foot



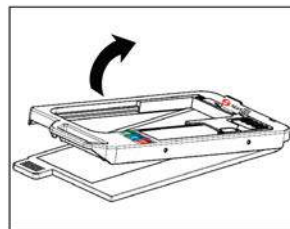
Measure Length



Measure Width



Analyse Print



Erase Print



LOW ARCH SUPPORT



MEDIUM ARCH SUPPORT



HIGH ARCH SUPPORT



## Features & Benefits

- Fully waterproof boot through the use of HDry® technology.
- Vibram® Sole resistant to 300°C by contact, oil and hydrocarbons. Anti-wear scuff cap and compound designed with Vibram® for stability and grip performance. Outsole designed to strike the ground better and to improve self-cleaning.
- Zero(k) Anti-Perforation – a fabric anti-perforation foil. Resistant to over 1100N with zero perforation.
- Dynamic HC Control Technology – An ergonomic rigid internal structure that houses the heel into the right seat, adjusting the foot support and control of the ankle sideways movements. It keeps the foot tight to the shoe, allowing the perfect fit.
- Stabil Active – A support made of rigid plastic material that stabilizes the heel bone, the instep and tarsal joints, without altering energy absorption providing comfort and greater stability.
- WED (Wire Electricity Discharge) – an integrated strip with 4 filaments of carbon fiber, ensuring that regardless of the insoles used, the shoe maintains its proven anti-static properties.



## Industries

- Agriculture
- Construction
- Heavy Engineering
- Logistics
- Offshore
- Quarries/Mining
- Rail
- Utilities
- Wind Energy



<b>Style</b>	Avalon
<b>Range</b>	Polar
<b>Type</b>	Half Knee Boot
<b>Upper</b>	Microfiber
<b>Lining</b>	3D Air Circulation
<b>Insole</b>	Air-Fit
<b>Sole</b>	PU/Rubber Vibram® – HRO SRC
<b>Toe cap</b>	CTC Composite Toe Cap
<b>Midsole</b>	Zero (k) Anti-Perforation
<b>Size</b>	38-48
<b>Weight</b>	860 gr
<b>Specification</b>	S3 HRO HI WR SRC
<b>Colour</b>	Black
<b>EN</b>	ISO 20345:2011





# Montana HDry® Fur Lined

81156-23

## Features & Benefits

- Fully waterproof boot through the use of HDry® technology.
- Two-component PU sole with anti-wear scuff cap and high-comfort in-between insole. Outsole with self-cleaning tread pattern, with a formula designed to ensure greater grip. SRC Antislip standard.
- Dynamic HC Control Technology – An ergonomic rigid internal structure that houses the heel into the right seat, adjusting the foot support and control of the ankle sideways movements. It keeps the foot tight to the shoe, allowing the perfect fit.
- Stabil Active – A support made of rigid plastic material that stabilizes the heel bone, the instep and tarsal joints, without altering energy absorption providing comfort and greater stability.
- Zero(k) Anti-Perforation – a fabric anti-perforation foil. Resistant to over 1100N with zero perforation.
- WED (Wire Electricity Discharge) – an integrated strip with 4 filaments of carbon fiber, ensuring that regardless of the insoles used, the shoe maintains its proven anti-static properties.

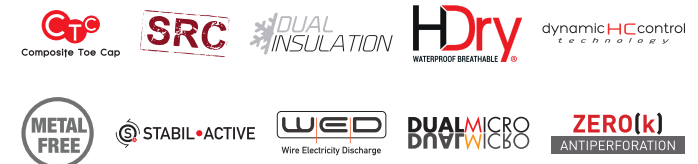


## Industries

- Agriculture
- Construction
- Heavy Engineering
- Offshore
- Quarries/Mining
- Rail
- Utilities
- Wind Energy



<b>Style</b>	Montana HDry® Fur Lined
<b>Range</b>	Endurance
<b>Type</b>	Rigger
<b>Upper</b>	Greased Nubuk Leather Hydrotech
<b>Lining</b>	Genuine Wool Polar
<b>Insole</b>	Dual Insulation
<b>Sole</b>	PU/Dual Density SRC
<b>Toe cap</b>	CTC Composite Toe Cap
<b>Midsole</b>	Zero(k) Anti-Perforation
<b>Size</b>	36-48
<b>Weight</b>	850gr
<b>Specification</b>	S3 WR CI SRC
<b>Colour</b>	Brown
<b>EN</b>	ISO 20345:2011



## Features & Benefits

- Fully waterproof boot through the use of HDry® technology.
- Vibram® Sole resistant to 300°C by contact, oil and hydrocarbons. Anti-wear scuff cap and compound designed with Vibram® for stability and grip performance. Outsole designed to strike the ground better and to improve self-cleaning.
- Zero(k) Anti-Perforation – a fabric anti-perforation foil. Resistant to over 1100N with zero perforation.
- Dynamic HC Control Technology – An ergonomic rigid internal structure that houses the heel into the right seat, adjusting the foot support and control of the ankle sideways movements. It keeps the foot tight to the shoe, allowing the perfect fit.
- Stabil Active – A support made of rigid plastic material that stabilizes the heel bone, the instep and tarsal joints, without altering energy absorption providing comfort and greater stability.
- WED (Wire Electricity Discharge) – an integrated strip with 4 filaments of carbon fiber, ensuring that regardless of the insoles used, the shoe maintains its proven anti-static properties.



<b>Style</b>	Stelvio
<b>Range</b>	Polar
<b>Type</b>	6" Ankle Boot
<b>Upper</b>	Greased Nubuk Leather Hydrotech
<b>Lining</b>	3D Air Circulation
<b>Insole</b>	Blowfit 2.0
<b>Sole</b>	PU/Rubber Vibram®
<b>Toe cap</b>	CTC Composite Toe Cap
<b>Midsole</b>	Zero (k) Anti-Perforation
<b>Size</b>	38-48
<b>Weight</b>	865gr
<b>Specification</b>	S3 HRO HI WR SRC
<b>Colour</b>	Black
<b>EN</b>	ISO 20345:2011

## Industries

- Agriculture
- Construction
- Heavy Engineering
- Logistics
- Offshore
- Quarries/Mining
- Rail
- Utilities
- Wind Energy



# Stelvio - Brown

80087-01

## Features & Benefits

- Vibram® Sole resistant to 300°C by contact, oil and hydrocarbons. Anti-wear scuff cap and compound designed with Vibram® for stability and grip performance. Outsole designed to strike the ground better and to improve self-cleaning.
- Zero(k) Anti-Perforation – a fabric anti-perforation foil. Resistant to over 1100N with zero perforation.
- Dynamic Control Technology – an ergonomic rigid structure that accommodates the heel, adjusting the foot support and control of the ankle in sideways movements. The plastic material increases protection of the ankle against sharp or pointy objects.
- Stabil Active – A support made of rigid plastic material that stabilizes the heel bone, the instep and tarsal joints, without altering energy absorption providing comfort and greater stability.
- WED (Wire Electricity Discharge) – an integrated strip with 4 filaments of carbon fiber, ensuring that regardless of the insoles used, the shoe maintains its proven anti-static properties.



<b>Style</b>	Stelvio
<b>Range</b>	Atlantida
<b>Type</b>	6" Ankle Boot
<b>Upper</b>	Greased Nubuk Leather Hydrotech
<b>Lining</b>	3D Air Circulation
<b>Insole</b>	Blowfit
<b>Sole</b>	PU/Rubber Vibram®
<b>Toe cap</b>	CTC Composite Toe Cap
<b>Midsole</b>	Zero (k) Anti-Perforation
<b>Size</b>	38-48
<b>Weight</b>	765gr
<b>Specification</b>	S3 HRO HI SRC
<b>Colour</b>	Brown
<b>EN</b>	ISO 20345:2011

## Industries

- Agriculture
- Construction
- Heavy Engineering
- Logistics
- Offshore
- Quarries/Mining
- Rail
- Utilities
- Wind Energy



# Stelvio - Black

80087-00

## Features & Benefits

- Vibram® Sole resistant to 300°C by contact, oil and hydrocarbons. Anti-wear scuff cap and compound designed with Vibram® for stability and grip performance. Outsole designed to strike the ground better and to improve self-cleaning.
- Zero(k) Anti-Perforation – a fabric anti-perforation foil. Resistant to over 1100N with zero perforation.
- Dynamic Control Technology – an ergonomic rigid structure that accommodates the heel, adjusting the foot support and control of the ankle in sideways movements. The plastic material increases protection of the ankle against sharp or pointy objects.
- Stabil Active – A support made of rigid plastic material that stabilizes the heel bone, the instep and tarsal joints, without altering energy absorption providing comfort and greater stability.
- WED (Wire Electricity Discharge) – an integrated strip with 4 filaments of carbon fiber, ensuring that regardless of the insoles used, the shoe maintains its proven anti-static properties.



<b>Style</b>	Stelvio
<b>Range</b>	Atlantida
<b>Type</b>	6" Ankle Boot
<b>Upper</b>	Greased Nubuk Leather Hydrotech
<b>Lining</b>	3D Air Circulation
<b>Insole</b>	Blowfit
<b>Sole</b>	PU/Rubber Vibram®
<b>Toe cap</b>	CTC Composite Toe Cap
<b>Midsole</b>	Zero (k) Anti-Perforation
<b>Size</b>	38-48
<b>Weight</b>	765 gr.
<b>Specification</b>	S3 HRO HI SRC
<b>Colour</b>	Black
<b>EN</b>	ISO 20345:2011

## Industries

- Agriculture
- Construction
- Heavy Engineering
- Logistics
- Offshore
- Quarries/Mining
- Rail
- Utilities
- Wind Energy



## Features & Benefits

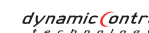
- Sturdy, comfortable and extremely light boot.
- Two-component PU sole with anti-wear scuff cap and high-comfort in-between insole. Outsole with self-cleaning tread pattern, with a formula designed to ensure greater grip. SRC Antislip standard.
- Zero(k) Anti-Perforation – a fabric anti-perforation foil. Resistant to over 1100N with zero perforation.
- Dynamic Control Technology – an ergonomic rigid structure that accommodates the heel, adjusting the foot support and control of the ankle in sideways movements. The plastic material increases protection of the ankle against sharp or pointy objects.
- Stabil Active – A support made of rigid plastic material that stabilizes the heel bone, the instep and tarsal joints, without altering energy absorption providing comfort and greater stability.
- WED (Wire Electricity Discharge) – an integrated strip with 4 filaments of carbon fiber, ensuring that regardless of the insoles used, the shoe maintains its proven anti-static properties.



<b>Style</b>	Corvara
<b>Range</b>	Endurance
<b>Type</b>	6" Ankle Boot
<b>Upper</b>	Greased Nubuk Leather Hydrotech
<b>Lining</b>	3D Air Circulation
<b>Insole</b>	Blowfit
<b>Sole</b>	PU Dual Density SRC
<b>Toe cap</b>	CTC Composite Toe Cap
<b>Midsole</b>	Zero (k) Anti-Perforation
<b>Size</b>	38-48
<b>Weight</b>	715gr
<b>Specification</b>	S3 SRC
<b>Colour</b>	Black
<b>EN</b>	ISO 20345:2011

## Industries

- Agriculture
- Construction
- Heavy Engineering
- Logistics
- Rail
- Utilities
- Wind Energy



## Features & Benefits

- Very Light well balanced classic boot.
- Two-component PU sole with anti-wear scuff cap and high-comfort in-between insole. Outsole with self-cleaning tread pattern, with a formula designed to ensure greater grip. SRC Antislip standard.
- Steel Protection - Steel toecap, with anti-corrosion paint. Protection of over 200J. Comfortable fit. Stainless steel Plate resistant puncture with acid-resistant paint.
- Dynamic HC Control Technology – An ergonomic rigid internal structure that houses the heel into the right seat, adjusting the foot support and control of the ankle sideways movements. It keeps the foot tight to the shoe, allowing the perfect fit.
- Stabil Active – A support made of rigid plastic material that stabilizes the heel bone, the instep and tarsal joints, without altering energy absorption providing comfort and greater stability.
- WED (Wire Electricity Discharge) – an integrated strip with 4 filaments of carbon fiber, ensuring that regardless of the insoles used, the shoe maintains its proven anti-static properties.



<b>Style</b>	Gamma
<b>Range</b>	Horizon
<b>Type</b>	6" Ankle Boot
<b>Upper</b>	Greased Nubuk Dakar Leather Hydro
<b>Lining</b>	Soft Full Grain Leather
<b>Insole</b>	Climation-Fit 337
<b>Sole</b>	PU Dual Density SRC
<b>Toe cap</b>	Steel Toe Cap
<b>Midsole</b>	Steel Midsole
<b>Size</b>	36-48
<b>Weight</b>	760gr
<b>Specification</b>	S3 SRC
<b>Colour</b>	Black
<b>EN</b>	ISO 20345:2011

## Industries

- Aerospace
- Automotive
- Electronics
- Fabrication
- Facilities
- Light Assembly
- Logistics
- Manufacturing



## Features & Benefits

- Very Light well balanced classic boot.
- Two-component PU sole with anti-wear scuff cap and high-comfort in-between insole. Outsole with self-cleaning tread pattern, with a formula designed to ensure greater grip. SRC Antislip standard.
- Steel Protection - Steel toecap, with anti-corrosion paint. Protection of over 200J. Comfortable fit. Stainless steel Plate resistant puncture with acid-resistant paint.
- Dynamic HC Control Technology – An ergonomic rigid internal structure that houses the heel into the right seat, adjusting the foot support and control of the ankle sideways movements. It keeps the foot tight to the shoe, allowing the perfect fit.
- Stabil Active – A support made of rigid plastic material that stabilizes the heel bone, the instep and tarsal joints, without altering energy absorption providing comfort and greater stability.
- WED (Wire Electricity Discharge) – an integrated strip with 4 filaments of carbon fiber, ensuring that regardless of the insoles used, the shoe maintains its proven anti-static properties.



<b>Style</b>	Illinois
<b>Range</b>	Horizon
<b>Type</b>	6" Ankle Boot
<b>Upper</b>	Full Grain Leather Hydrotech
<b>Lining</b>	3D Air Circulation
<b>Insole</b>	Climaction-Fit 337
<b>Sole</b>	PU Dual Density SRC
<b>Toe cap</b>	Steel Toe Cap
<b>Midsole</b>	Steel Midsole
<b>Size</b>	36-48
<b>Weight</b>	700gr
<b>Specification</b>	S3 SRC
<b>Colour</b>	Black
<b>EN</b>	ISO 20345:2011

## Industries

- Aerospace
- Automotive
- Electronics
- Fabrication
- Facilities
- Light Assembly
- Logistics
- Manufacturing



## Features & Benefits

- Lightweight and comfortable boot with soft durable midsole for enhanced energy absorption in the heel.
- Two-component PU sole with anti-wear scuff cap and high-comfort in-between insole. Outsole with self-cleaning tread pattern, with a formula designed to ensure greater grip. SRC Antislip standard.
- X-Method Anti Perforation – Non metal perforation resistant Insert to over 1100 N with a 3.0 mm truncated cone nail. Protection over the entire sole of the foot. Flexible and comfortable.
- Dynamic HC Control Technology – An ergonomic rigid internal structure that houses the heel into the right seat, adjusting the foot support and control of the ankle sideways movements. It keeps the foot tight to the shoe, allowing the perfect fit.
- Stabil Active – A support made of rigid plastic material that stabilizes the heel bone, the instep and tarsal joints, without altering energy absorption providing comfort and greater stability.
- WED (Wire Electricity Discharge) – an integrated strip with 4 filaments of carbon fiber, ensuring that regardless of the insoles used, the shoe maintains its proven anti-static properties.



<b>Style</b>	Dealer
<b>Range</b>	Touring
<b>Type</b>	Slip-on Ankle Boot
<b>Upper</b>	Greased Nubuk Leather Hydrotech
<b>Lining</b>	3D Air Circulation
<b>Insole</b>	Blowfit 2.0
<b>Sole</b>	PU Dual Density SRC
<b>Toe cap</b>	CTC Composite Toe Cap
<b>Midsole</b>	X-Method - Resistant to 3.0mm Nails
<b>Size</b>	36-48
<b>Weight</b>	620gr
<b>Specification</b>	S3 SRC
<b>Colour</b>	Brown
<b>EN</b>	ISO 20345:2011

## Industries

- Agriculture
- Construction
- Fabrication
- Facilities
- Heavy Engineering
- Logistics
- Manufacturing
- Utilities





## Features & Benefits

- Light, and breathable trainer with a sporty design.
- ESD footwear discharge static electricity and avoid damaging surrounding objects; they are ESD compliant for EPA Areas.
- Double density PU sole, Outer- and in-between sole with ESD compound. For use in contact with sensitive electronic equipment. Light and comfortable, very versatile, highly non-slip SRC Antislip standard.
- X-Method Anti Perforation – Non metal perforation resistant Insert to over 1100 N with a 3.0 mm truncated cone nail. Protection over the entire sole of the foot. Flexible and comfortable.
- Dynamic HC Control Technology – An ergonomic rigid internal structure that houses the heel into the right seat, adjusting the foot support and control of the ankle sideways movements. It keeps the foot tight to the shoe, allowing the perfect fit.
- Stabil Active – A support made of rigid plastic material that stabilizes the heel bone, the instep and tarsal joints, without altering energy absorption providing comfort and greater stability.



<b>Style</b>	Auckland
<b>Range</b>	Skipper
<b>Type</b>	Trainer
<b>Upper</b>	Digitex Hydro Airy
<b>Lining</b>	Breezy 3D, Two-Layers Combination
<b>Insole</b>	Five 4 Fit
<b>Sole</b>	PU / PU ESD-Plus SRC
<b>Toe cap</b>	Alu-SXT 2.0 Aluminium Toe Cap
<b>Midsole</b>	X-Method - Resistant to 3.0mm Nails
<b>Size</b>	40-48
<b>Weight</b>	560gr
<b>Specification</b>	S3 SRC ESD
<b>Colour</b>	Black
<b>EN</b>	ISO 20345:2011 IEC EN 61340-5-1:2016 IEC EN 61340-4-3:2018 IEC EN 61340-4-5:2018

## Industries

- Aerospace
- Automotive
- Electronics
- Fabrication
- Facilities
- Light Assembly
- Logistics
- Manufacturing



## Features & Benefits

- Light, and breathable boot with a sporty design.
- ESD footwear discharge static electricity and avoid damaging surrounding objects; they are ESD compliant for EPA Areas.
- Double density PU sole, Outer- and in-between sole with ESD compound. For use in contact with sensitive electronic equipment. Light and comfortable, very versatile, highly non-slip SRC Antislip standard.
- X-Method Anti Perforation – Non metal perforation resistant Insert to over 1100 N with a 3.0 mm truncated cone nail. Protection over the entire sole of the foot. Flexible and comfortable.
- Dynamic HC Control Technology – An ergonomic rigid internal structure that houses the heel into the right seat, adjusting the foot support and control of the ankle sideways movements. It keeps the foot tight to the shoe, allowing the perfect fit.
- Stabil Active – A support made of rigid plastic material that stabilizes the heel bone, the instep and tarsal joints, without altering energy absorption providing comfort and greater stability.



<b>Style</b>	Auckland
<b>Range</b>	Skipper
<b>Type</b>	Ankle Boot
<b>Upper</b>	Digitex Hydro Airy
<b>Lining</b>	Breezy 3D, Two-Layers Combination
<b>Insole</b>	Five 4 Fit
<b>Sole</b>	PU / PU ESD-Plus SRC
<b>Toe cap</b>	Alu-SXT 2.0 Aluminium Toe Cap
<b>Midsole</b>	X-Method - Resistant to 3.0mm Nails
<b>Size</b>	38-48
<b>Weight</b>	595gr
<b>Specification</b>	S3 SRC ESD
<b>Colour</b>	Black
<b>EN</b>	ISO 20345:2011 IEC EN 61340-5-1:2016 IEC EN 61340-4-3:2018 IEC EN 61340-4-5:2018

## Industries

- Aerospace
- Automotive
- Electronics
- Fabrication
- Facilities
- Light Assembly
- Logistics
- Manufacturing



## Features & Benefits

- Double density PU sole, Outer- and in-between sole with ESD compound. For use in contact with sensitive electronic equipment. Light and comfortable, very versatile, highly non-slip SRC Antislip standard.
- ESD footwear discharge static electricity and avoid damaging surrounding objects; they are ESD compliant for EPA Areas.
- Dynamic HC Control Technology – An ergonomic rigid internal structure that houses the heel into the right seat, adjusting the foot support and control of the ankle sideways movements. It keeps the foot tight to the shoe, allowing the perfect fit.
- Stabil Active – A support made of rigid plastic material that stabilizes the heel bone, the instep and tarsal joints, without altering energy absorption providing comfort and greater stability.
- WED (Wire Electricity Discharge) – an integrated strip with 4 filaments of carbon fiber, ensuring that regardless of the insoles used, the shoe maintains its proven anti-static properties.



<b>Style</b>	Belluno
<b>Range</b>	Modular
<b>Type</b>	Ankle Boot
<b>Upper</b>	Full Grain Drummed Leather Hydrotech, PU Coated Leather
<b>Lining</b>	3D Air Circulation 320 gr.
<b>Insole</b>	Blow-fit 2.0
<b>Sole</b>	PU / PU ESD-Plus SRC
<b>Toe cap</b>	C.T.C. - Composite Toe Cap
<b>Midsole</b>	Zero (k) Anti-Perforation
<b>Size</b>	41-47 Modular-Fit
<b>Weight</b>	610 gr
<b>Specification</b>	S3 SRC ESD
<b>Colour</b>	Black
<b>EN</b>	ISO 20345:2011 IEC EN 61340-5-1:2016 IEC EN 61340-4-3:2018 IEC EN 61340-4-5:2018

## Industries

- Automotive
- Electronics
- Light Assembly
- Logistics



## Features & Benefits

- Extremely light and comfortable trainer.
- ESD footwear discharge static electricity and avoid damaging surrounding objects; they are ESD compliant for EPA Areas.
- Double density PU sole, Outer- and in-between sole with ESD compound. For use in contact with sensitive electronic equipment. Light and comfortable, very versatile, highly non-slip SRC Antislip standard.
- Dynamic HC Control Technology – An ergonomic rigid internal structure that houses the heel into the right seat, adjusting the foot support and control of the ankle sideways movements. It keeps the foot tight to the shoe, allowing the perfect fit.
- Stabil Active – A support made of rigid plastic material that stabilizes the heel bone, the instep and tarsal joints, without altering energy absorption providing comfort and greater stability.
- WED (Wire Electricity Discharge) – an integrated strip with 4 filaments of carbon fiber, ensuring that regardless of the insoles used, the shoe maintains its proven anti-static properties.



<b>Style</b>	Cuban
<b>Range</b>	Ritmo
<b>Type</b>	Trainer
<b>Upper</b>	Microfiber Suede
<b>Lining</b>	3D Air Circulation 320 gr.
<b>Insole</b>	Five 4 Fit
<b>Sole</b>	PU / PU ESD Plus SRC
<b>Toe cap</b>	Alu-SXT 2.0 Aluminium Toe Cap
<b>Midsole</b>	Zero (k) Anti-Perforation
<b>Size</b>	35-48
<b>Weight</b>	520gr
<b>Specification</b>	S3 SRC ESD
<b>Colour</b>	Black
<b>EN</b>	ISO 20345:2011

## Industries

- Aerospace
- Automotive
- Electronics
- Fabrication
- Facilities
- Light Assembly
- Logistics
- Manufacturing



## Features & Benefits

- Extremely light and comfortable trainer.
- ESD footwear discharge static electricity and avoid damaging surrounding objects; they are ESD compliant for EPA Areas.
- Double density PU sole, Outer- and in-between sole with ESD compound. For use in contact with sensitive electronic equipment. Light and comfortable, very versatile, highly non-slip SRC Antislip standard.
- X-Method Anti Perforation – Non metal perforation resistant Insert to over 1100 N with a 3.0 mm truncated cone nail. Protection over the entire sole of the foot. Flexible and comfortable.
- Dynamic HC Control Technology – An ergonomic rigid internal structure that houses the heel into the right seat, adjusting the foot support and control of the ankle sideways movements. It keeps the foot tight to the shoe, allowing the perfect fit.
- Stabil Active – A support made of rigid plastic material that stabilizes the heel bone, the instep and tarsal joints, without altering energy absorption providing comfort and greater stability.
- WED (Wire Electricity Discharge) – an integrated strip with 4 filaments of carbon fiber, ensuring that regardless of the insoles used, the shoe maintains its proven anti-static properties.



<b>Style</b>	Swing
<b>Range</b>	Ritmo Cross
<b>Type</b>	Trainer
<b>Upper</b>	Greased Nubuk Leather Hydrotech
<b>Lining</b>	3D Air Circulation
<b>Insole</b>	Five 4 Fit
<b>Sole</b>	PU / PU ESD-Plus SRC
<b>Toe cap</b>	Alu-SXT 2.0 Aluminium Toe Cap
<b>Midsole</b>	X-Method - Resistant to 3.0mm Nails
<b>Size</b>	35-48
<b>Weight</b>	600gr
<b>Specification</b>	S3 SRC ESD
<b>Colour</b>	Black
<b>EN</b>	ISO 20345:2011 IEC EN 61340-5-1:2016 IEC EN 61340-4-3:2018 IEC EN 61340-4-5:2018

## Industries

- Aerospace
- Automotive
- Electronics
- Fabrication
- Facilities
- Light Assembly
- Logistics
- Manufacturing



## Features & Benefits

- Very Light well balanced classic boot.
- Two-component PU sole with anti-wear scuff cap and high-comfort in-between insole. Outsole with self-cleaning tread pattern, with a formula designed to ensure greater grip. SRC Antislip standard.
- Steel Protection - Steel toecap, with anti-corrosion paint. Protection of over 200J. Comfortable fit. Stainless steel Plate resistant puncture with acid-resistant paint.
- Dynamic HC Control Technology – An ergonomic rigid internal structure that houses the heel into the right seat, adjusting the foot support and control of the ankle sideways movements. It keeps the foot tight to the shoe, allowing the perfect fit.
- Stabil Active – A support made of rigid plastic material that stabilizes the heel bone, the instep and tarsal joints, without altering energy absorption providing comfort and greater stability.
- WED (Wire Electricity Discharge) – an integrated strip with 4 filaments of carbon fiber, ensuring that regardless of the insoles used, the shoe maintains its proven anti-static properties.



<b>Style</b>	Kentucky
<b>Range</b>	Horizon
<b>Type</b>	Low Shoe
<b>Upper</b>	Full Grain Leather Hydrotech
<b>Lining</b>	3D Air Circulation
<b>Insole</b>	Climaction-Fit 337
<b>Sole</b>	PU Dual Density SRC
<b>Toe cap</b>	Steel Toe Cap
<b>Midsole</b>	Steel Midsole
<b>Size</b>	36-48
<b>Weight</b>	650gr
<b>Specification</b>	S3 SRC
<b>Colour</b>	Black
<b>EN</b>	ISO 20345:2011

## Industries

- Aerospace
- Automotive
- Electronics
- Fabrication
- Facilities
- Light Assembly
- Logistics
- Manufacturing



### Features & Benefits

- ESD footwear discharge static electricity and avoid damaging surrounding objects; they are ESD compliant for EPA Areas.
- Two-component PU sole with anti-wear scuff cap and high-comfort in-between insole. Outsole with self-cleaning tread pattern, with a formula designed to ensure greater grip. SRC Antislip standard.
- X-Method Anti Perforation – Non metal perforation resistant Insert to over 1100 N with a 3.0 mm truncated cone nail. Protection over the entire sole of the foot. Flexible and comfortable.
- Dynamic HC Control Technology – An ergonomic rigid internal structure that houses the heel into the right seat, adjusting the foot support and control of the ankle sideways movements. It keeps the foot tight to the shoe, allowing the perfect fit.
- Stabil Active – A support made of rigid plastic material that stabilizes the heel bone, the instep and tarsal joints, without altering energy absorption providing comfort and greater stability.



<b>Style</b>	Cima
<b>Range</b>	Skipper Lady
<b>Type</b>	Trainer
<b>Upper</b>	Digitex Hydro Airy, Microfibre Suede
<b>Lining</b>	Breezy 3D, Two-Layers Combination
<b>Insole</b>	Five 4 Fit Lady
<b>Sole</b>	PU Dual-Density SRC
<b>Toe cap</b>	Alu SXT 2.0 Toe Cap
<b>Midsole</b>	X-Method - Resistant to 3.0mm Nails
<b>Size</b>	35-42 Lady
<b>Weight</b>	420gr
<b>Specification</b>	S3 SRC ESD
<b>Colour</b>	Black
<b>EN</b>	ISO 20345:2011 IEC EN 61340-5-1:2016 IEC EN 61340-4-3:2018 IEC EN 61340-4-5:2018

### Industries

- Aerospace
- Automotive
- Electronics
- Fabrication
- Facilities
- Light Assembly
- Logistics
- Manufacturing



### Features & Benefits

- ESD footwear discharge static electricity and avoid damaging surrounding objects; they are ESD compliant for EPA Areas.
- Two-component PU sole with anti-wear scuff cap and high-comfort in-between insole. Outsole with self-cleaning tread pattern, with a formula designed to ensure greater grip. SRC Antislip standard.
- X-Method Anti Perforation – Non metal perforation resistant Insert to over 1100 N with a 3.0 mm truncated cone nail. Protection over the entire sole of the foot. Flexible and comfortable.
- Dynamic HC Control Technology – An ergonomic rigid internal structure that houses the heel into the right seat, adjusting the foot support and control of the ankle sideways movements. It keeps the foot tight to the shoe, allowing the perfect fit.
- Stabil Active – A support made of rigid plastic material that stabilizes the heel bone, the instep and tarsal joints, without altering energy absorption providing comfort and greater stability.



<b>Style</b>	Cima
<b>Range</b>	Skipper Lady
<b>Type</b>	Trainer
<b>Upper</b>	Digitex Hydro Airy, Microfibre Suede
<b>Lining</b>	Breezy 3D, Two-Layers Combination
<b>Insole</b>	Five 4 Fit Lady
<b>Sole</b>	PU Dual-Density SRC
<b>Toe cap</b>	Alu SXT 2.0 Toe Cap
<b>Midsole</b>	X-Method - Resistant to 3.0mm Nails
<b>Size</b>	35-42 Lady
<b>Weight</b>	420gr
<b>Specification</b>	S1P SRC
<b>Colour</b>	Grey
<b>EN</b>	ISO 20345:2011 IEC EN 61340-5-1:2016 IEC EN 61340-4-3:2018 IEC EN 61340-4-5:2018





## Features & Benefits

- ESD footwear discharge static electricity and avoid damaging surrounding objects; they are ESD compliant for EPA Areas.
- Double density PU sole, Outer- and in-between sole with ESD compound. For use in contact with sensitive electronic equipment. Light and comfortable, very versatile, highly non-slip SRC Antislip standard.
- Zero(k) Anti-Perforation – a fabric anti-perforation foil. Resistant to over 1100N with zero perforation.
- Dynamic HC Control Technology – An ergonomic rigid internal structure that houses the heel into the right seat, adjusting the foot support and control of the ankle sideways movements. It keeps the foot tight to the shoe, allowing the perfect fit.
- Stabil Active – A support made of rigid plastic material that stabilizes the heel bone, the instep and tarsal joints, without altering energy absorption providing comfort and greater stability.



<b>Style</b>	Brescia
<b>Range</b>	Modular
<b>Type</b>	Low Shoe
<b>Upper</b>	Full Grain Drummed Leather Hydrotech, PU Coated Leather
<b>Lining</b>	3D Air Circulation 320 gr.
<b>Insole</b>	Blow-fit 2.0
<b>Sole</b>	PU / PU ESD-Plus SRC
<b>Toe cap</b>	C.T.C. - Composite Toe Cap
<b>Midsole</b>	Zero (k) Anti-Perforation
<b>Size</b>	41-47 Modular-Fit
<b>Weight</b>	580 gr
<b>Specification</b>	S3 SRC ESD
<b>Colour</b>	Black
<b>EN</b>	ISO 20345:2011 IEC EN 61340-5-1:2016 IEC EN 61340-4-3:2018 IEC EN 61340-4-5:2018

## Industries

- Automotive
- Electronics
- Light Assembly
- Logistics



## Features & Benefits

- Two-component PU sole with anti-wear scuff cap and high-comfort in-between insole. Outsole with self-cleaning tread pattern, with a formula designed to ensure greater grip. SRC Antislip standard.
- Zero(k) Anti-Perforation – a fabric anti-perforation foil. Resistant to over 1100N with zero perforation.
- Dynamic HC Control Technology – An ergonomic rigid internal structure that houses the heel into the right seat, adjusting the foot support and control of the ankle sideways movements. It keeps the foot tight to the shoe, allowing the perfect fit.
- Stabil Active – A support made of rigid plastic material that stabilizes the heel bone, the instep and tarsal joints, without altering energy absorption providing comfort and greater stability.
- WED (Wire Electricity Discharge) – an integrated strip with 4 filaments of carbon fiber, ensuring that regardless of the insoles used, the shoe maintains its proven anti-static properties.



<b>Style</b>	Land
<b>Range</b>	Endurance
<b>Type</b>	Low Shoe
<b>Upper</b>	Drummed Suede Leather
<b>Lining</b>	3D Air Circulation 320 gr.
<b>Insole</b>	Blow-fit
<b>Sole</b>	PU Dual Density SRC
<b>Toe cap</b>	C.T.C. - Composite Toe Cap
<b>Midsole</b>	Zero (k) Anti-Perforation
<b>Size</b>	36-48
<b>Weight</b>	670 gr
<b>Specification</b>	S1P SRC
<b>Colour</b>	Black
<b>EN</b>	ISO 20345:2011

## Industries

- Agriculture
- Automotive
- Construction
- Electronics
- Fabrication
- Garden
- General Handling
- Light Assembly
- Logistics
- Manufacturing
- Utilities



## Features & Benefits

- Vibram® rubber tread with Fire & Ice mix for high performance in all temperatures. Self-cleaning design with special SRC grip. PU foam insole, light and comfortable. Modular overtoe to protect uppers.
- Zero(k) Anti-Perforation – a fabric anti-perforation foil. Resistant to over 1100N with zero perforation.
- Dynamic HC Control Technology – An ergonomic rigid internal structure that houses the heel into the right seat, adjusting the foot support and control of the ankle sideways movements. It keeps the foot tight to the shoe, allowing the perfect fit.
- Stabil Active – A support made of rigid plastic material that stabilizes the heel bone, the instep and tarsal joints, without altering energy absorption providing comfort and greater stability.
- WED (Wire Electricity Discharge) – an integrated strip with 4 filaments of carbon fiber, ensuring that regardless of the insoles used, the shoe maintains its proven anti-static properties.



## Industries

- Agriculture
- Construction
- Fabrication
- Garden
- Manufacturing



<b>Style</b>	Tonale
<b>Range</b>	Scout
<b>Type</b>	Ankle Boot
<b>Upper</b>	Greased Nubuk Dakar Leather
<b>Lining</b>	3D Air Circulation 320 gr.
<b>Insole</b>	Qrs 01
<b>Sole</b>	PR/Rubber Vibram Fire & Ice
<b>Toe cap</b>	Alu SXT 2.0 Toe Cap
<b>Midsole</b>	X-Method - Resistant to 3.0mm Nails
<b>Size</b>	36-50
<b>Weight</b>	735 gr
<b>Specification</b>	S3 HRO HI SRC
<b>Colour</b>	Bbrown
<b>EN</b>	ISO 20345:2011



# Bergamo

86206-00

## Features & Benefits

- Classic boot designed for food, hospital and pharmaceutical sectors.
- Two-component PU sole with anti-wear scuff cap and high-comfort in-between insole. Outsole with self-cleaning tread pattern, with a formula designed to ensure greater grip. SRC Antislip standard.
- Non marking "Crystal" outsole with self cleaning reliefs and a step rest. Resistant to oil and hydrocarbons.
- Dynamic HC Control Technology – An ergonomic rigid internal structure that houses the heel into the right seat, adjusting the foot support and control of the ankle sideways movements. It keeps the foot tight to the shoe, allowing the perfect fit.
- Stabil Active – A support made of rigid plastic material that stabilizes the heel bone, the instep and tarsal joints, without altering energy absorption providing comfort and greater stability.
- WED (Wire Electricity Discharge) – an integrated strip with 4 filaments of carbon fiber, ensuring that regardless of the insoles used, the shoe maintains its proven anti-static properties.



<b>Style</b>	Bergamo
<b>Range</b>	Crystal
<b>Type</b>	6" Ankle Boot
<b>Upper</b>	Microfiber XTop
<b>Lining</b>	Bacteriostatic Teklife 3D
<b>Insole</b>	Flyfit
<b>Sole</b>	PU Dual Density SRC
<b>Toe cap</b>	CTC Composite Toe Cap
<b>Midsole</b>	None
<b>Size</b>	35-48
<b>Weight</b>	510gr
<b>Specification</b>	S2 SRC
<b>Colour</b>	White
<b>EN</b>	ISO 20345:2011

## Industries

- Food
- Pharmaceutical



## Features & Benefits

- Classic shoe designed for food, hospital and pharmaceutical sectors.
- Extremely light and flexible giving maximum comfort to the wearer whether standing or walking for long periods.
- Two-component PU sole with anti-wear scuff cap and high-comfort in-between insole. Outsole with self-cleaning tread pattern, with a formula designed to ensure greater grip. SRC Antislip standard.
- Non marking "Crystal" outsole with self cleaning reliefs and a step rest. Resistant to oil and hydrocarbons.
- Dynamic HC Control Technology – An ergonomic rigid internal structure that houses the heel into the right seat, adjusting the foot support and control of the ankle sideways movements. It keeps the foot tight to the shoe, allowing the perfect fit.
- Stabil Active – A support made of rigid plastic material that stabilizes the heel bone, the instep and tarsal joints, without altering energy absorption providing comfort and greater stability.
- WED (Wire Electricity Discharge) – an integrated strip with 4 filaments of carbon fiber, ensuring that regardless of the insoles used, the shoe maintains its proven anti-static properties.



<b>Style</b>	Venezia
<b>Range</b>	Crystal
<b>Type</b>	Slip-on
<b>Upper</b>	Microfiber X-Top
<b>Lining</b>	Bacteriostatic Teklife 3D
<b>Insole</b>	Flyfit
<b>Sole</b>	PU Dual Density SRC
<b>Toe cap</b>	CTC Composite Toe Cap
<b>Midsole</b>	None
<b>Size</b>	35-48
<b>Weight</b>	460gr
<b>Specification</b>	S2 SRC
<b>Colour</b>	White
<b>EN</b>	ISO 20345:2011

## Industries

- Food
- Pharmaceutical



## Features & Benefits

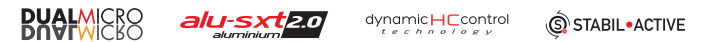
- Classic shoe designed for food, hospital and pharmaceutical sectors.
- Extremely light and flexible giving maximum comfort to the wearer whether standing or walking for long periods.
- ESD footwear discharge static electricity and avoid damaging surrounding objects; they are ESD compliant for EPA Areas.
- Double density PU sole, Outer- and in-between sole with ESD compound. For use in contact with sensitive electronic equipment. Light and comfortable, very versatile, highly non-slip SRC Antislip standard.
- Antibacterial compounds added to preserve the characteristics longer.
- Dynamic HC Control Technology – An ergonomic rigid internal structure that houses the heel into the right seat, adjusting the foot support and control of the ankle sideways movements. It keeps the foot tight to the shoe, allowing the perfect fit.
- Stabil Active – A support made of rigid plastic material that stabilizes the heel bone, the instep and tarsal joints, without altering energy absorption providing comfort and greater stability.
- **Ladies Style Available: Alba 95428-00**



<b>Style</b>	Adria
<b>Range</b>	Skipper
<b>Type</b>	Low Shoe
<b>Upper</b>	Microfiber X-Pro
<b>Lining</b>	Bacteriostatic Teklife 3D
<b>Insole</b>	Five 4 Fit
<b>Sole</b>	PU/PU Plus ESD SRC
<b>Toe cap</b>	Alu SXT 2.0
<b>Midsole</b>	None
<b>Size</b>	38-48
<b>Weight</b>	490gr
<b>Specification</b>	S2 SRC
<b>Colour</b>	White
<b>EN</b>	ISO 20345:2011 IEC EN 61340-5-1:2016 IEC EN 61340-4-3:2018 IEC EN 61340-4-5:2018

## Industries

- Food
- Pharmaceutical



## Permanent Floor Stand

Merchandise a range of ATG® gloves on this attractive metal display stand. With 16 hooks, this unit can carry at least 192 pairs of gloves.

Stand Dimension (cm): W 55 x H 166

The option to add baskets to this stand offers greater capacity to hold more stock.

## Carded Gloves

Add that final touch to your merchandised stand with gloves that come individually carded.

TRAY07



TRAY08



TRAY08



STAND32



## Counter Top Display Unit

Showcase ATG® gloves in our easily assembled custom made counter boxes. Suitable for that impulse buy!

Holds 24 pairs of MaxiFlex® gloves or 12 pairs of either MaxiTherm® or MaxiDry® Zero™ gloves.

Box Dimension (cm): W 29 x D 30

Header Dimension (cm): W 29 x H 34



ATGBOX

## Floor Dumpbin

This sturdy eye-catching floor dumpbin can hold a full box of ATG® gloves. Each unit has individual compartments to display different glove sizes.

Holds 144 pairs of mixed style gloves or 72 pairs of either MaxiTherm® or MaxiDry® Zero™ gloves.

Dump Dimension (cm): W 50 x H 74

Header Dimension (cm): W 50 x H 37



ATGDUMP



## MegaMan® Free Standing Display Unit

Showcase MegaMan® gloves in our easily assembled custom made FSDUs! Eye catching without taking up valuable floor space. Holds 30 boxes.



STAND 56

## MegaMan® Shelf Unit

Showcase MegaMan® gloves in our easily assembled custom made counter box, suitable for that impulse buy!



STAND 54

## MegaMan® Counter Unit

Merchandise a standard size shelf with this sturdy, well branded eye catching unit. This unit holds both MegaMan® vend packs and bulk boxes to suit every customers needs.



STAND 55

## Orange Gripper Stand

Display your Orange Gripper merchandise on this three shelf free standing display unit.

This unit hold 30 Orange Gripper boxes.

Dimension (cm): W 53 x H 140



STAND 40

## Sixton® Stand

The Sixton® floor stand takes up minimal floor space while still showing 4 different styles of foot wear.

Dimension (cm): W 30 x H 178

## Black Metal Free Standing Footwear Stand

Display up to six styles of footwear on this free standing display unit.

Dimension (cm): W 36 x H 159

STAND 34



STAND45



## Sixton® Boot Display Unit

Showcase up to two different boot styles on this sturdy, well branded eye catching unit. Perfect for a counter display!

Dimension (cm): W 33 x H 29



STAND 35

## Sixton® Counter/Slat Wall Unit

Showcase Sixton® shoes on the counter or on your storeroom slat wall on our easily assembled custom made unit!

Dimension (cm): W 31 x H 35



STAND 36



## Contact Us

17-18 Keypoint Business Park  
Rosemount Park Drive  
Ballycoolin Road, D11  
D11 K6NK

*Tel:* +353 (0) 1 885 30 30  
*Fax:* +353 (0) 1 885 30 31

### UK

[www.keypoint-uk.co.uk](http://www.keypoint-uk.co.uk)  
[sales@keypoint-uk.co.uk](mailto:sales@keypoint-uk.co.uk)

### Ireland

[www.keypoint.ie](http://www.keypoint.ie)  
[sales@keypoint.ie](mailto:sales@keypoint.ie)

